

## HOME AND FOREIGN MISSIONS,

EMBRACING

ENGLAND AND WALES,  
AUSTRALIA,  
CHINA,  
EAST AFRICA,  
WEST AFRICA,  
JAMAICA.

## HOME AND FOREIGN MISSIONS.

THE United Methodist Free Churches, from their origin, have taken a deep interest in Missions. The first Assembly of the Wesleyan Association, held in 1836, resolved on raising a Mission Fund. In the following year, the purpose was accomplished. At first, the Fund was intended to aid those Circuits desiring an Itinerant Minister, who were unable wholly to provide for his maintenance; and also to employ Home Missionaries in those parts of the United Kingdom where suitable openings presented themselves.

Notwithstanding the heavy tax imposed on these young Churches by the erection of places of worship, school-rooms, and the like, not much time passed away ere they felt that a further part must be performed by them towards preaching "repentance and the remission of sins among all nations." In this matter, they were greatly aided in 1838 by the Amalgamation of several churches in Jamaica.

The foreign work having been commenced, was more or less extended as opportunity served. But it was not until the Amalgamation of 1857 was an accomplished fact that any considerable efforts towards the evangelisation of other countries became practicable. And since then, home duties have claimed a larger share of attention than in churches longer established. Still, it is matter of thankfulness that attention to home work has not hindered foreign effort more.

The Foreign Stations are in Australia, Jamaica, Eastern and Western Africa, and China. Their number and strength may be gathered from the District Numerical Returns as given in another portion of this work. From these, and from the Foreign Local Missionary Income, as exhibited in the annexed Tables, it will be seen that, on the whole, a steady and constant advance has been made in the several fields of missionary enterprise.



A special word is needed respecting the churches of Australia.

### AUSTRALIAN CHURCHES.

For several years, the Australian Churches were grouped in two Districts, having Annual Meetings which, subject to the Annual Assembly, had authority within their jurisdiction. In process of time, each District Meeting desired to be separately constituted an Annual Assembly, with all the powers belonging to it, for exercise within its own area. This request, with slight limitations, was granted by the Annual Assembly of 1891.

Those Assemblies were respectively designated—"The Victorian and Tasmanian Annual Assembly," and "The Queensland and New South Wales Annual Assembly." To the former belonged 29 ministers, and 1815 members; to the latter 9 ministers, and 707 members.

On the 1st of January, 1892, all ministers sent from England, and then resident in Australia, with the exception of the Rev. T. A. Bayley, became Colonial Ministers, subject to the Australian Annual Assemblies.

Since 1892, proposals for Methodist Union in Australia have advanced apace, which our Churches generally have accepted. This union is now taking effect, and is to be completed in 1902.

### NEW ZEALAND CHURCHES.

Methodist Union in New Zealand, on a broad and liberal basis, became in 1895 an accomplished fact. Hence the following record in the Printed Minutes of 1896:—"The Churches in the New Zealand District, consisting of 982 members, have, with the concurrence of and by arrangement with the Annual Assembly, become a part of the Methodist Church in New Zealand.

### MISSIONARY EXTENSION.

In 1897, it was generally felt that a determined effort should be made to consolidate and extend the work of Missions at home and abroad. It was affirmed by the Annual Assembly that the time had come when it was imperative

that the ordinary Missionary income at home should be brought up to £15,000 per year. With a view to this important end, it was urged:—

1. That new subscribers should be obtained, and that old subscribers should be asked to increase their subscriptions.

2. That Ministers preach on Missions at least once per quarter.

3. That pains be taken to make all Missionary Services successful.

4. That all Sunday Schools make monthly or quarterly collections for Missions, and supply Missionary information to scholars and teachers.

5. That all Y.P.S.C.E. give the cause of Missions a place on their programme.

6. That Ladies' auxiliaries be formed in Churches and Sunday Schools wherever practicable.

7. That a copy of these resolutions be sent to all Circuits at home and abroad.

### HOME MISSION REGULATIONS.

1. Circuits or Churches are expected to make public Annual Collections in all their places of worship, for the support of the Connexional Mission Fund. Circuits or Churches not making them will (except in special cases) be disentitled to send Representatives to the Annual Assembly (see Basis of Union in Minutes, 1857, p. 7).

2. Circuits soliciting assistance from this Fund must forward to the Connexional Committee through the General Missionary Secretary full particulars of Circuits, Receipts, and Disbursements.

3. In order to stimulate our Ministers and People in dependent Circuits and Mission Stations to increased pecuniary effort, it is expedient that grants in aid of the Ministers' salaries in such Circuits and Stations should, in future, be *prospective* instead of *retrospective* as heretofore, and that the operation of this rule should date from the Assembly of 1862.

4. The various amounts granted to dependent Circuits prospectively, shall be remitted in four instalments, provided the quarterly statement of Circuit income and expenditure show a deficit equal to the fourth part of the sum granted.



5. The Connexional Committee is empowered, when it deems it expedient, to appoint an Auditor to examine the accounts of Circuits or Stations receiving grants; and the acceptance of a grant by a Circuit or Station is considered as an agreement on its part to produce to such Auditor the account books when required.

### FOREIGN MISSION REGULATIONS.

*Adopted in 1887.*

1. The Connexional Committee to be a consenting party to the admission on probation of any brother sent out to a Foreign Station.

2. The Connexional Committee, likewise, to be a concurring party in arranging for the Examination of Missionaries, and be satisfied as to the character of the Examination; in an emergency, the Connexional Committee or Connexional Officers shall have the right to make arrangements for the Examination of a Missionary on a Foreign Station.

3. The General Missionary Secretary to keep a clear and full record of the appointment of Foreign Missionaries, and of the terms and conditions on which they receive the appointment, that such record may be referred to hereafter; each brother to receive a copy of such terms and conditions, and to attach his signature thereto.

### LAY MISSIONARIES FOR FOREIGN WORK.

*Adopted in 1896.*

#### CANDIDATES.

The Candidate must be a member of the United Methodist Free Church, or of some other Evangelical Nonconformist Church, and have had some experience in Mission work, and he must undergo an examination before the Missionary Committee as to Christian character and qualifications.

#### AGE OF CANDIDATES.

The Candidates must be unmarried, and about twenty-one, but not more than thirty years of age; but if any special case should arise, it shall be dealt with by the Committee.

### THE WORK OF THE LAY MISSIONARY.

The Lay Missionary in the work of the Mission shall be under the direction and guidance of the Superintendent of the Mission to which he is appointed.

#### SALARY.

The salary of the Lay Missionary shall be at the rate of £80 per annum, and residence on the Mission Station free of rent and taxes.

#### OUTFIT AND PASSAGE.

That £15 be allowed for outfit, and the passage to the Mission Station be Second class.

#### TERM OF SERVICE.

That in the case of East Africa the term of service shall be six years, unless incapacitated by illness.

#### FURLOUGH.

That after remaining on the Station for the full term, a furlough of twelve months shall be allowed.

#### INVALIDED HOME.

1. The Committee does not hold itself responsible for the support of the Lay Missionary if there should be permanent failure of health, but in making a grant, or otherwise, will deal with each case according to its merits.

2. When the Missionary stays his full term, or is obliged to come home invalided, the cost of his voyage shall be defrayed by this Committee.

#### FINANCIAL SECRETARIES.

1843-45	Rev. G. Smith, 3.	1856	Rev. H. Tarrant, 1.
1846-48	Rev. G. Chesson, 3.	1857-58	Rev. J. Steele, 2.
	Mr. T. Booth, 3.	1859-60	Rev. S. S. Barton, 2.
1849-51	Rev. J. Saul, 3.	1861	Rev. R. Chew, 1.
1852-53	Rev. W. H. Walker, 2.	1862-63	Rev. J. Kir-op, 2.
1854-55	Rev. T. Hacking, 2.		

#### FOREIGN MISSIONARY SECRETARIES.

1860-61	Rev. R. Eckett, 2.	1862-63	Rev. S. S. Barton, 2.
---------	--------------------	---------	-----------------------



## GENERAL MISSIONARY SECRETARIES.

1864-70	Rev. S. S. Barton, 7.	1881-89	Rev. J. Adcock, 9.
1871-80	Rev. R. Bushell, 10.	1890-95	Rev. G. Turner, 6.
1896-98	Rev. Henry T. Chapman, 3.		

Until the Annual Assembly of 1860, both Home and Foreign Missions were under the superintendence of the Connexional Committee.

## CONNEXIONAL COMMITTEE.

(Home Missionary Committee.)

The Connexional Committee now (1898) consists of thirty-one members; the President, Connexional Secretary, Corresponding Secretary, Connexional Treasurer, Missionary Secretary, Chapel Secretary, Principal of the Theological Institute, and twenty-four other brethren, elected by ballot, subject to there being only one from the same Circuit, and one from a District having not more than 4000, or two from a District having more than 4000 and not more than 8000 members, or three from a District having more than 8000 members. The twenty-four having the highest number of votes are declared duly elected. The said Committee enters upon its duties at the close of the Assembly, and has authority to take such action as may be deemed desirable for the general management of the Connexional affairs, but consistently with the right of each Circuit to manage its own local affairs; and further, the Committee is empowered to make such arrangements as it may deem expedient with Churches and Circuits that may desire to unite with the Methodist Free Churches in accordance with the Basis of Union.

The following is the Annual List of the Members of this Committee from the time of its formation:—

1836 Rev. S. WARREN, LL.D., *Pres.*, 1; M. JOHNSON, Esq., *Con. Sec.*, 1; J. J. LEES, Esq., *Sec.*, 1; Rev. D. K. Shoebotham, 1; Messrs. G. Ashworth, 1; R. Barford, 1; H. M. Bunbry, 1; G. Cookman, 1; R. Eckett, 1; R. Emmett, 1; R. Farrer, 1; J. Greenhalgh, 1; G. Hughes, 1; W. Johnson, 1; J. Livesey, 1; W. Matthews, 1; C. Parker, 1; J. A. Picton, 1; T. P. Rosevear, 1; D. Rowland, 1; J. Sigston, 1; W. Smith, 1; W. Souter, 1; G. Turton, 1; W. Wood, 1.  
1837 J. LIVESSEY, Esq., *Pres.*, 2; M. JOHNSON, Esq., *Con. Sec.*, 2; Rev.

S. WARREN, *Cor. Sec.*, 2; W. SMITH, Esq., *Con. Tr.*, 2; Revs J. Molineux, 1; J. Peters, 1; Messrs. G. Ashworth, 2; J. Averill, 1; R. Eckett, 2; R. Farrer, 2; G. Hughes, 2; J. Kipling, 1; J. Mallinson, 1; W. Matthews, 2; D. Rowland, 2; J. Sigston, 2; W. Wood, 2; T. B. Young, 1.

1838 Rev. J. MOLINEUX, *Pres. and Cor. Sec.*, 2; R. FARRER, Esq., *Con. Sec.*, 3; J. PETRIE, Esq., *Con. Tr.*, 1; Revs. H. Breeden, 1; E. Darke, 1; R. Eckett, 3; J. Peters, 2; T. Townend, 1; J. Worrall, 1; Messrs. J. Averill, 2; T. Booth, 1; T. Hickling, 1; Jas. Hoyle, 1; J. Hull, 1; G. Hughes, 3; M. Johnson, 3; J. Kipling, 2; J. Livesey, 3; J. Mallinson, 2; W. Richards, 1; T. P. Rosevear, 2; D. Rowland, 3; J. Sigston, 3; G. Swallow, 1; T. B. Young, 2.

1839 J. SIGSTON, Esq., *Pres. and Cor. Sec.*, 4; Rev. J. MOLINEUX, *Con. Sec.*, 3; J. PETRIE, Esq., *Con. Tr.*, 2; Revs. H. Breeden, 2; E. Darke, 2; R. Eckett, 4; J. Peters, 3; G. Smith, 1; T. Townend, 2; J. Worrall, 2; Messrs. G. Ashworth, 3; J. Beynon, 1; T. Booth, 2; R. Farrer, 4; J. Handley, 1; Jas. Hoyle, 2; T. Hickling, 2; J. Hull, 2; G. Hughes, 4; M. Johnson, 4; J. Kipling, 3; J. Mallinson, 3; T. P. Rosevear, 3; D. Rowland, 4; G. Swallow, 2; T. Taylor, 1; G. Turton, 2; T. B. Young, 3.

1840 D. ROWLAND, Esq., *Pres.*, 5; Revs. R. ECKETT, *Con. Sec.*, 5; J. MOLINEUX, *Cor. Sec.*, 4; J. PETRIE, Esq., *Con. Tr.*, 3; Revs. M. Baxter, 1; H. Breeden, 3; E. Darke, 3; J. Peters, 4; G. Smith, 2; T. Townend, 3; Messrs. T. Booth, 3; J. Brideson, 1; J. Hill, 1; Jas. Hoyle, 3; M. Johnson, 5; J. Kipling, 4; R. Lowe, 1; J. Mallinson, 4; T. P. Rosevear, 4; R. Sharpe, 1; J. Sigston, 5; G. Swallow, 3; G. Turton, 3; T. B. Young, 4.

1841 Rev. R. ECKETT, *Pres.*, 6; J. KIPLING, Esq., *Con. Sec.*, 5; D. ROWLAND, Esq., *Cor. Sec.*, 6; J. PETRIE, Esq., *Con. Tr.*, 4; Revs. M. Baxter, 3; H. Breeden, 4; E. Darke, 4; J. Mollineux, 5; J. Peters, 5; T. Townend, 4; Messrs. T. Booth, 4; J. Brideson, 2; F. Cuthbertson, 1; J. Hill, 2; Jas. Hoyle, 4; M. Johnson, 6; R. Lowe, 2; J. Mallinson, 5; T. P. Rosevear, 5; R. Sharpe, 2; J. Sigston, 6; G. Swallow, 4; G. Turton, 4; T. B. Young, 5.

1842 Rev. T. TOWNEND, *Pres.*, 5; M. JOHNSON, Esq., *Con. Sec.*, 7; D. ROWLAND, Esq., *Cor. Sec.*, 7; J. PETRIE, Esq., *Con. Tr.*, 5; Revs. H. Breeden, 5; R. Eckett, 7; A. Gilbert, 1; J. Molineux, 6; J. Peters, 6; G. Smith, 3; J. Worrall, 3; Messrs. T. Booth, 5; J. Cropp, 1; F. Cuthbertson, 2; S. Heape, 1; Jno. Hoyle, 1; J. Kipling, 6; R. Lowe, 3; W. Morcom, 1; T. P. Rosevear, 6; R. Sharpe, 3; G. Turton, 5; J. Yewdall, 1; T. B. Young, 6.

1843 Rev. J. PETERS, *Pres.*, 7; M. JOHNSON, Esq., *Con. Sec.*, 8; D. ROWLAND, Esq., *Cor. Sec.*, 8; J. PETRIE, Esq., *Con. Tr.*, 6; Revs. H. Breeden, 6; E. Darke, 5; R. Eckett, 8; A. Gilbert, 2; J. Molineux, 7; G. Smith, 4; T. Townend, 6; J. Woolstenholme, 1; Messrs. G. Ashworth, 4; T. Booth, 6; F. Cuthbertson, 3; Jno. Hoyle, 2; John Kirkham, 1; J. Kipling, 7; R. Lowe, 4; T. P. Rosevear, 7; Richard Sharpe, 4; G. Turton, 6; John Yewdall, 2; T. B. Young, 7.

1844 Revs. E. DARKE, *Pres.*, 6; R. ECKETT, *Con. Sec.*, 9; H. BREEDEN, *Cor. Sec.*, 7; J. PETRIE, Esq., *Con. Tr.*, 7; Revs. A. Gilbert, 3; J. Molineux, 8; J. Peters, 8; D. Rutherford, 1; G. Smith, 5; T. Townend, 7; J. Woolstenholme, 2; J. Wright, 1; Messrs. T. Booth, 7; F. Cuthbertson, 4; Jno. Hoyle, 3; M. Johnson, 9; J. Kipling, 8; R. Lowe, 5; W.



Rinder, 1; T. P. Rosevear, 8; D. Rowland, 9; R. Sharpe, 5; J. Yewdall, 3; T. B. Young, 8.

1845 Revs. J. MOLINEUX, *Pres.*, 9; R. ECKETT, *Con. Sec.*, 10; H. BREEDEN, *Cor. Sec.*, 8; J. PETRIE, *Esq., Con. Tr.*, 8; Revs. M. Beswick, 1; E. Darke, 7; A. Gilbert, 4; J. Peters, 9; W. Patterson, 1; G. Robinson, 1; D. Rutherford, 2; G. Smith, 6; T. Townend, 8; Messrs. T. Booth, 8; E. Butterworth, 1; Jno. Hoyle, 4; M. Johnson, 10; J. Kipling, 9; J. Nettleton, 1; J. A. Picton, 2; D. Rowland, 10; T. P. Rosevear, 9; G. Turton, 7; T. B. Young, 9.

1846 Rev. R. ECKETT, *Pres.*, 11; J. Kipling, *Esq., Con. Sec.*, 10; Rev. H. BREEDEN, *Cor. Sec.*, 9; J. PETRIE, *Esq., Con. Tr.*, 9; Revs. G. Chesson, 1; E. Darke, 8; W. Dawson, 1; A. Gilbert, 5; W. Patterson, 2; J. Peters, 10; D. Rutherford, 3; G. Smith, 7; T. Townend, 9; J. Molineux, 10; Messrs. T. Booth, 9; Jno. Hoyle, 5; M. Johnson, 11; J. Nettleton, 2; O. Ormerod, 1; T. P. Rosevear, 10; D. Rowland, 11; G. Swallow, 5; G. Turton, 8; T. B. Young, 10.

1847 Revs. R. ECKETT, *Pres.*, 12; J. PETERS, *Con. Sec.*, 11; H. BREEDEN, *Cor. Sec.*, 10; J. PETRIE, *Esq., Con. Tr.*, 10; Revs. T. A. Bayley, 1; G. Chesson, 2; E. Darke, 9; T. Ellery, 1; A. Gilbert, 6; J. Molineux, 11; W. Patterson, 3; D. Rutherford, 4; G. Smith, 8; Messrs. T. Booth, 10; W. Collins, 1; Jno. Hoyle, 6; J. Kipling, 11; W. Rinder, 2; T. P. Rosevear, 11; D. Rowland, 12; G. Swallow, 6; J. Thompson, 1; E. Townend, 1; G. Turton, 9.

1848 Revs. H. BREEDEN, *Pres.*, 11; R. ECKETT, *Con. Sec.*, 13; J. PETERS, *Cor. Sec.*, 12; J. PETRIE, *Esq., Con. Tr.*, 11; Revs. T. A. Bayley, 2; G. Chesson, 3; E. Darke, 10; W. Dawson, 2; A. Gilbert, 7; A. Keene, 1; J. Molineux, 12; W. Patterson, 4; D. Rutherford, 5; G. Robinson, 2; J. Saul, 1; J. Townend, 1; Messrs. Jno. Hoyle, 7; J. Kipling, 12; J. Mallinson, 6; T. P. Rosevear, 12; D. Rowland, 13; G. Swallow, 7; J. Thompson, 2; G. Turton, 10.

1849 Revs. G. SMITH, *Pres.*, 9; R. ECKETT, *Con. Sec.*, 14; J. PETERS, *Cor. Sec.*, 13; J. PETRIE, *Esq., Con. Tr.*, 12; Revs. H. Breeden, 12; W. R. Brown, 1; G. Chesson, 4; E. Darke, 11; A. Keene, 2; J. Molineux, 13; W. Patterson, 5; D. Rutherford, 6; J. Saul, 2; J. Townend, 2; Messrs. W. Howe, 1; Jno. Hoyle, 8; J. Kipling, 13; J. Mallinson, 7; T. P. Rosevear, 13; D. Rowland, 14; R. Sharpe, 6; T. Taylor, 2; G. Turton, 11; T. B. Young, 11.

1850 Revs. W. PATTERSON, *Pres.*, 6; R. ECKETT, *Con. Sec.*, 15; J. PETERS, *Cor. Sec.*, 14; J. PETRIE, *Esq., Con. Tr.*, 13; Revs. T. A. Bayley, 3; H. Breeden, 13; W. R. Brown, 2; E. Darke, 12; A. Gilbert, 8; J. Molineux, 14; D. Rutherford, 7; J. Saul, 3; G. Smith, 10; J. Townend, 3; Messrs. W. Howe, 2; Jno. Hoyle, 9; J. Kipling, 14; R. Lowe, 6; J. Mallinson, 8; T. P. Rosevear, 14; D. Rowland, 15; G. Turton, 12; J. Wright, 1; T. B. Young, 12.

1851 Revs. J. PETERS, *Pres.*, 15; R. ECKETT, *Con. Sec.*, 16; J. MOLINEUX, *Cor. Sec.*, 15; J. PETRIE, *Esq., Con. Tr.*, 14; Revs. T. A. Bayley, 4; H. Breeden, 14; W. R. Brown, 3; E. Darke, 13; A. Gilbert, 9; A. Keene, 3; W. Patterson, 7; W. Reed, 1; D. Rutherford, 8; J. Saul, 4; G. Smith, 11; Messrs. S. Heape, 2; Jno. Hoyle, 10; J. Kipling, 15; R. Lowe, 7; J. Mallinson, 9; W. Rinder, 3; T. Taylor, 3; R. Thorpe, 1; T. B. Young, 13.

1852 Revs. T. A. BAYLEY, *Pres.*, 5; R. ECKETT, *Con. Sec.*, 17; J. MOLINEUX, *Cor. Sec.*, 16; J. PETRIE, *Esq., Con. Tr.*, 15; Revs. M. Baxter, 3; H. Breeden, 15; E. Darke, 14; J. W. Gilchrist, 1; W. Ince, 1; W. Jackson, 1; W. Patterson, 8; J. Peters, 16; D. Rutherford, 9; J. Saul, 5; G. Smith, 12; W. H. Walker, 1; Messrs. W. Cochrane, 1; Jno. Hoyle, 11; W. Howe, 3; E. Kipling, 1; R. Lowe, 8; J. Mallinson, 10; T. Schofield, 1; R. Thorpe, 2.

1853 Revs. E. DARKE, *Pres.*, 15; R. ECKETT, *Con. Sec.*, 18; J. MOLINEUX, *Cor. Sec.*, 17; J. PETRIE, *Esq., Con. Tr.*, 16; Revs. T. A. Bayley, 6; H. Breeden, 16; G. Chesson, 5; W. Dawson, 2; A. Gilbert, 10; J. Guttridge, 1; W. Jackson, 2; W. Patterson, 9; J. Peters, 17; J. Saul, 6; G. Smith, 13; W. H. Walker, 2; Messrs. C. Arthur, 1; W. Cochrane, 2; Jno. Hoyle, 12; W. Howe, 4; E. Kipling, 2; R. Lowe, 9; J. Mallinson, 11; R. Thorpe, 3.

1854 Revs. A. GILBERT, *Pres.*, 11; T. A. BAYLEY, *Con. Sec.*, 7; R. ECKETT, *Cor. Sec.*, 19; W. HOWE, *Esq., Con. Tr.*, 5; Revs. S. S. Barton, 1; M. Baxter, 4; H. Breeden, 17; E. Darke, 16; W. Dawson, 3; T. Hacking, 1; J. Molineux, 18; J. Peters, 18; W. Patterson, 10; W. Reed, 2; D. Rutherford, 10; J. Saul, 7; Messrs. C. Arthur, 2; C. Cheetham, 1; F. Cuthbertson, 5; Jno. Hoyle, 13; E. Kipling, 3; J. Petrie, 17; W. Rinder, 4; John Young, 1.

1855 Revs. W. DAWSON, *Pres.*, 4; R. ECKETT, *Con. Sec.*, 20; J. PETERS, *Cor. Sec.*, 19; W. HOWE, *Esq., Con. Tr.*, 6; Revs. T. A. Bayley, 8; S. S. Barton, 2; M. Baxter, 5; E. Darke, 17; T. Hacking, 2; A. Gilbert, 12; J. Molineux, 19; W. Patterson, 10; W. Reed, 3; J. Saul, 8; G. Smith, 14; Messrs. C. Arthur, 3; C. Cheetham, 2; F. Cuthbertson, 6; Jno. Hoyle, 14; R. Lowe, 10; J. Petrie, 18; W. Rinder, 5; J. Thompson, 3; R. Thorpe, 4.

1856 Revs. M. BAXTER, *Pres.*, 6; R. ECKETT, *Con. Sec.*, 21; W. REED, *Cor. Sec.*, 4; W. HOWE, *Esq., Con. Tr.*, 7; Revs. T. A. Bayley, 9; H. Breeden, 18; S. S. Barton, 3; J. Cartwright, 1; W. Dawson, 5; A. Gilbert, 13; T. Hacking, 3; J. Molineux, 20; W. Patterson, 12; G. Smith, 15; J. Saul, 9; J. Peters, 20; H. Tarrant, 1; Messrs. C. Arthur, 4; W. Dixon, 1; J. Kirkham, 2; E. Kipling, 4; J. Petrie, 19; W. Rinder, 6; J. Thompson, 4.

1857 Revs. J. EVERETT, *Pres.*, 1; R. ECKETT, *Con. Sec.*, 22; W. REED, *Cor. Sec.*, 5; W. HOWE, *Esq., Con. Tr.*, 8; Revs. S. S. Barton, 4; M. Baxter, 7; T. A. Bayley, 10; T. Hacking, 4; J. Mann, 1; W. Patterson, 13; J. Peters, 21; H. Tarrant, 2; Messrs. J. Benson, 1; J. Chipchase, 1; J. Colman, 1; G. W. Harrison, 1; Jno. Hoyle, 15; H. Kay, 1; E. Kipling, 5; H. F. Lawes, 1; J. Massingham, 1; J. Petrie, 20; I. Schofield, 1; J. Unwin, 1.

1858 Revs. R. ECKETT, *Pres.*, 23; W. REED, *Con. Sec.*, 6; J. CHIPCHASE, *Esq., Cor. Sec.*, 2; W. HOWE, *Esq., Con. Tr.*, 9; Revs. S. S. Barton, 5; M. Baxter, 8; T. A. Bayley, 11; W. R. Brown, 4; J. Colman, 2; J. Everett, 2; A. Gilbert, 14; T. Hacking, 5; J. Mann, 2; J. Peters, 22; J. Steele, 1; Messrs. J. Benson, 2; C. Carr, 1; J. Cuthbertson, 1; G. W. Harrison, 2; Jno. Hoyle, 16; H. F. Lawes, 2; J. Massingham, 2; J. Petrie, 21; J. Unwin, 2.

1859 Revs. J. MANN, *Pres.*, 3; R. ECKETT, *Con. Sec.*, 24; T. HACKING, *Cor. Sec.*, 6; W. HOWE, *Esq., Con. Tr.*, 10; Revs. S. S. Barton, 6;



M. Baxter, 9; T. A. Bayley, 12; W. R. Brown, 5; J. Colman, 3; J. Everett, 3; A. Gilbert, 15; J. Guttridge, 2; J. Peters, 23; W. Reed, 7; Messrs. J. Benson, 3; C. Carr, 2; J. Chipchase, 3; J. Cuthbertson, 2; A. Gould, 1; G. W. Harrison, 3; H. F. Lawes, 3; J. Petrie, 22; J. B. Sharpley, 1; J. Unwin, 3.

1860 Revs. T. HACKING, *Pres.*, 7; M. BAXTER, *Con. Sec.*, 10; J. COLMAN, *Cor. Sec.*, 4; W. HOWE, *Esq.*, *Con. Tr.*, 11; Revs. R. ECKETT, *Mis. Sec.*, 25; S. S. Barton, 7; T. A. Bayley, 13; W. R. Brown, 6; R. Chew, 1; J. Everett, 4; A. Gilbert, 16; J. Guttridge, 3; J. Mann, 4; M. Miller, 1; J. Peters, 24; W. Reed, 8; J. S. Withington, 1; Messrs. C. Carr, 3; J. Cuthbertson, 3; J. Chipchase, 4; H. F. Lawes, 4; J. Petrie, 23; J. B. Sharpley, 2; D. Whitehead, 1.

1861 Revs. S. S. BARTON, *Pres.*, 8; J. COLMAN, *Con. Sec.*, 5; T. A. BAYLEY, *Cor. Sec.*, 14; C. CHEETHAM, *Esq.*, *Con. Tr.*, 3; Revs. R. ECKETT, *Mis. Sec.*, 26; M. Baxter, 11; W. R. Brown, 7; R. Chew, 2; J. Everett, 5; A. Gilbert, 17; J. Guttridge, 4; T. Hacking, 8; J. Mann, 5; M. Miller, 2; J. Peters, 25; W. Reed, 9; J. S. Withington, 2; Messrs. J. Chipchase, 5; J. Cuthbertson, 4; T. Cuthbertson, 1; W. H. Cozens-Hardy, J.P., 1; W. Howe, 12; H. F. Lawes, 5; J. B. Sharpley, 3.

1862 Revs. W. REED, *Pres.*, 10; J. COLMAN, *Con. Sec.*, 6; J. GUTTRIDGE, *Cor. Sec.*, 5; C. CHEETHAM, *Esq.*, *Con. Tr.*, 4; Revs. S. S. BARTON, *Mis. Sec.*, 9; J. KIRSOP, *Fin. Sec.*, 1; M. Baxter, 12; W. R. Brown, 8; R. Chew, 3; W. Dawson, 6; J. Everett, 6; A. Gilbert, 18; T. Hacking, 9; J. Mann, 6; M. Miller, 3; T. Newton, 1; J. Peters, 26; J. S. Withington, 3; Messrs. J. Chipchase, 6; W. H. Cozens-Hardy, J.P., 2; J. Cuthbertson, 5; T. Cuthbertson, 2; H. F. Lawes, 6; J. B. Sharpley, 4.

1863 Revs. J. GUTTRIDGE, *Pres.*, 6; J. COLMAN, *Con. Sec.*, 7; T. HACKING, *Cor. Sec.*, 10; C. CHEETHAM, *Esq.*, *Con. Tr.*, 5; Revs. S. S. BARTON, *Mis. Sec.*, 10; J. KIRSOP, *Fin. Sec.*, 2; M. Baxter, 13; R. Chew, 4; J. Everett, 7; A. Gilbert, 19; J. Mann, 7; J. Mather, 1; M. Miller, 4; T. Newton, 2; J. Peters, 27; W. Reed, 11; Messrs. J. Benson, 4; W. H. Cozens-Hardy, J.P., 3; J. Cuthbertson, 6; H. F. Lawes, 7; H. T. Mawson, 1; J. Martin, 1; J. B. Sharpley, 5; A. Sharman, 1.

1864 Revs. J. COLMAN, *Pres.*, 8; M. MILLER, *Con. Sec.*, 5; T. NEWTON, *Cor. Sec.*, 3; C. CHEETHAM, *Esq.*, *Con. Tr.*, 6; Revs. S. S. BARTON, *Gen. Mis. Sec.*, 11; M. Baxter, 14; R. Chew, 5; W. Dawson, 7; J. Everett, 8; A. Gilbert, 20; W. Griffith, 1; J. Guttridge, 7; T. Hacking, 11; J. Mann, 8; J. Myers, 1; W. Reed, 12; J. S. Withington, 4; Messrs. J. Benson, 5; J. B. Burrows, M.D., 1; W. H. Cozens-Hardy, J.P., 4; J. Cuthbertson, 7; H. F. Lawes, 8; H. T. Mawson, 1; J. B. Sharpley, 6.

1865 Revs. W. R. BROWN, *Pres.*, 9; M. MILLER, *Con. Sec.*, 6; T. NEWTON, *Cor. Sec.*, 4; C. CHEETHAM, *Esq.*, *Con. Tr.*, 7; Revs. S. S. BARTON, *Gen. Mis. Sec.*, 12; M. Baxter, 15; J. Colman, 9; R. Chew, 6; W. Dawson, 8; J. Everett, 9; A. Gilbert, 21; W. Griffith, 2; J. Guttridge, 8; T. Hacking, 12; J. Mather, 2; J. Myers, 2; W. Reed, 13; Messrs. J. B. Burrows, M.D., 2; W. H. Cozens-Hardy, J.P., 5; J. Cuthbertson, 8; H. F. Lawes, 9; J. Martin, 2; H. T. Mawson, 3; J. B. Sharpley, 7.

1866 Revs. T. NEWTON, *Pres.*, 5; R. CHEW, *Con. Sec.*, 7; J. KIRSOP, *Cor. Sec.*, 3; C. CHEETHAM, *Esq.*, *Con. Tr.*, 8; Revs. S. S. BARTON, *Gen. Mis. Sec.*, 13; M. Baxter, 16; J. Colman, 10; J. Everett, 10; J. Garside, 1;

A. Gilbert, 22; J. Guttridge, 9; T. Hacking, 13; J. Mather, 3; M. Miller, 7; J. Myers, 3; W. Reed, 14; Messrs. J. B. Burrows, M.D., 3; J. Cuthbertson, 9; J. Green, 1; W. H. Cozens-Hardy, J.P., 6; H. F. Lawes, 10; J. Martin, 3; J. B. Sharpley, 8; A. Sharman, 2.

1867 Revs. R. CHEW, *Pres.*, 8; J. MYERS, *Con. Sec.*, 4; J. KIRSOP, *Cor. Sec.*, 4; C. CHEETHAM, *Esq.*, *Con. Tr.*, 9; Revs. S. S. BARTON, *Gen. Mis. Sec.*, 14; M. Baxter, 17; W. R. Brown, 10; J. Colman, 11; J. Everett, 11; A. Gilbert, 23; W. Griffith, 3; J. Guttridge, 10; T. Hacking, 14; J. Mather, 4; M. Miller, 8; T. Newton, 6; W. Reed, 15; Messrs. J. Cuthbertson, 10; J. Green, 2; W. H. Cozens-Hardy, J.P., 7; W. Howe, 13; H. F. Lawes, 11; H. T. Mawson, 4; A. Sharman, 3.

1868 Revs. M. MILLER, *Pres.*, 9; J. MYERS, *Con. Sec.*, 5; J. ADCOCK, *Cor. Sec.*, 1; C. CHEETHAM, *Esq.*, *Con. Tr.*, 10; Revs. S. S. BARTON, *Gen. Mis. Sec.*, 15; E. Boaden, 1; R. Chew, 9; J. Everett, 12; W. Griffith, 4; J. Guttridge, 11; T. Hacking, 15; J. Mather, 5; T. Newton, 7; W. Reed, 16; Messrs. T. Boddington, 1; J. B. Burrows, M.D., 4; J. Cuthbertson, 11; W. H. Cozens-Hardy, J.P., 8; W. H. Hart, 1; J. Martin, 4; H. T. Mawson, 5; T. Schofield, 2; A. Sharman, 4; J. B. Sharpley, 9.

1869 Revs. J. MATHER, *Pres.*, 6; R. BUSHELL, *Con. Sec.*, 1; J. ADCOCK, *Cor. Sec.*, 2; C. CHEETHAM, *Esq.*, *Con. Tr.*, 11; Revs. S. S. BARTON, *Gen. Mis. Sec.*, 16; R. Chew, 10; J. Garside, 2; W. Griffith, 5; J. Guttridge, 12; T. Hacking, 16; J. Kirsop, 5; M. Miller, 10; J. Myers, 6; W. Reed, 17; W. Patterson, 14; Messrs. T. Boddington, 2; J. B. Burrows, M.D., 5; J. Cuthbertson, 12; J. Green, 3; W. H. Cozens-Hardy, J.P., 9; W. H. Hart, 2; H. F. Lawes, 12; T. Schofield, 3; A. Sharman, 5.

1870 Revs. J. MYERS, *Pres.*, 7; R. BUSHELL, *Con. Sec.*, 2; J. S. WITHINGTON, *Cor. Sec.*, 5; C. CHEETHAM, *Esq.*, *Con. Tr.*, 12; Revs. S. S. BARTON, *Gen. Mis. Sec.*, 17; E. Boaden, 2; T. M. Booth, 1; W. R. Brown, 11; R. Chew, 11; J. Garside, 3; T. Hacking, 17; J. Kirsop, 6; J. Mather, 7; M. Miller, 11; W. Reed, 18; Messrs. T. Boddington, 3; J. Cuthbertson, 13; W. H. Cozens-Hardy, J.P., 10; J. Harrison, 1; W. Lewins, 1; R. Lloyd, 1; J. Nicholl, 1; T. Schofield, 4; A. Sharman, 6.

1871 Revs. E. BOADEN, *Pres.*, 3; J. S. WITHINGTON, *Con. Sec.*, 6; J. GARSIDE, *Cor. Sec.*, 4; H. T. MAWSON, *Esq.*, *Con. Tr.*, 6; Revs. R. BUSHELL, *Gen. Mis. Sec.*, 3; T. M. Booth, 2; W. R. Brown, 12; R. Chew, 12; W. Griffith, 6; J. Guttridge, 13; T. Hacking, 18; A. Hands, 1; M. Miller, 12; J. Myers, 8; W. Patterson, 15; Messrs. T. Boddington, 4; C. Cheetham, 13; J. Cuthbertson, 14; J. Green, 4; W. H. Hart, 3; R. Lloyd, 2; J. Nicholl, 2; A. Sharman, 7; A. Sharpley, 1.

1872 Revs. J. SWANN WITHINGTON, *Pres.*, 7; J. ADCOCK, *Con. Sec.*, 3; J. GARSIDE, *Cor. Sec.*, 5; H. T. MAWSON, *Esq.*, *Con. Tr.*, 7; Revs. R. BUSHELL, *Gen. Mis. Sec.*, 4; E. Boaden, 4; W. R. Brown, 13; R. Chew, 13; W. Griffith, 7; T. Hacking, 19; A. Holliday, 1; J. Kirsop, 7; M. Miller, 13; Messrs. T. Boddington, 5; W. Butler, 1; J. Cuthbertson, 15; J. Green, 5; W. H. Hart, 4; J. Harley, 1; H. F. Lawes, 13; R. Lloyd, 3; J. Nicholl, 3; A. Sharpley, 2; J. C. Yewdall, 1.

1873 Revs. J. ADCOCK, *Pres.*, 4; A. HOLLIDAY, *Con. Sec.*, 2; J. GARSIDE, *Cor. Sec.*, 6; H. T. MAWSON, *Esq.*, *Con. Tr.*, 8; Revs. R. BUSHELL, *Gen. Mis. Sec.*, 5; E. Boaden, 5; T. M. Booth, 3; W. R. Brown, 14; R. Chew, 14; T. Hacking, 20; J. Kirsop, 8; J. Mather, 8; M. Miller, 14; J. S. Withington, 8; Messrs. T. Boddington, 6; W. Butler, 2; J. Cuthbertson,



16; J. Green, 6; J. Harley, 2; W. H. Hart, 5; R. Lloyd, 4; A. Sharpley, 3; H. P. Vivian, 1; J. C. Yewdall, 2.

1874 Revs. J. GARSIDE, *Pres.*, 7; A. HOLLIDAY, *Con. Sec.*, 3; T. M. BOOTH, *Cor. Sec.*, 4; H. T. MAWSON, Esq., *Con. Tr.*, 9; Revs. R. BUSHELL, *Gen. Mis. Sec.*, 6; J. Adcock, 5; E. Boaden, 6; G. Chesson, 6; R. Chew, 15; W. Griffith, 8; T. Hacking, 21; J. Kirsop, 9; M. Miller, 15; W. Reed, 19; J. S. Withington, 9; Messrs. T. Boddington, 7; J. B. Burrows, M.D., 6; W. Butler, 3; J. Cuthbertson, 17; J. Green, 7; W. H. Cozens-Hardy, J.P., 11; J. Harley, 3; A. Sharpley, 4; H. P. Vivian, 2.

1875 Revs. J. KIRSOP, *Pres.*, 10; T. M. BOOTH, *Con. Sec.*, 5; W. BOYDEN, *Cor. Sec.*, 1; H. T. MAWSON, Esq., *Con. Tr.*, 10; Revs. R. BUSHELL, *Gen. Mis. Sec.*, 7; J. Adcock, 6; E. Boaden, 7; G. Chesson, 7; R. Chew, 16; J. Garside, 8; W. Griffith, 9; T. Hacking, 22; A. Holliday, 4; A. Jones, 1; M. Miller, 16; W. Reed, 20; Messrs. T. Boddington, 8; J. B. Burrows, M.D., 7; W. Butler, 4; J. Cuthbertson, 18; J. Green, 8; W. H. Cozens-Hardy, J.P., 12; J. Harley, 4; R. G. Rows, 1.

1876 Revs. T. M. BOOTH, *Pres.*, 6; W. BOYDEN, *Con. Sec.*, 2; S. CHESTER, *Cor. Sec.*, 1; H. T. MAWSON, Esq., *Con. Tr.*, 11; Revs. R. BUSHELL, *Gen. Mis. Sec.*, 8; R. Abercrombie, M.A., 1; J. Adcock, 7; W. R. Brown, 15; R. Chew, 17; J. Garside, 9; W. Griffith, 10; T. Hacking, 23; A. Hands, 2; A. Holliday, 5; W. Hubbard, 1; J. Kirsop, 11; M. Miller, 17; J. Myers, 9; W. Reed, 21; Messrs. W. Butler, 5; J. B. Burrows, M.D., 8; J. Cuthbertson, 19; W. H. Cozens-Hardy, J.P., 13; R. G. Rows, 2.

1877 Revs. A. HOLLIDAY, *Pres.*, 6; W. BOYDEN, *Con. Sec.*, 3; T. W. TOWNEND, *Cor. Sec.*, 1; H. T. MAWSON, Esq., *Con. Tr.*, 12; Revs. R. BUSHELL, *Gen. Mis. Sec.*, 9; R. Abercrombie, M.A., 2; J. Adcock, 8; T. M. Booth, 7; R. Chew, 18; J. Garside, 10; W. Griffith, 11; W. M. Hunter, 1; J. Kirsop, 12; J. Mather, 9; I. Miller, 1; M. Miller, 18; J. Myers, 10; J. S. Withington, 10; Messrs. R. Bird, 1; W. Butler, 6; J. Cuthbertson, 20; J. Green, 9; M. J. Hart, 1; W. H. Cozens-Hardy, J.P., 14; R. Lloyd, 5; R. G. Rows, 3; H. P. Vivian, 3; B. Waite, 1.

1878 Revs. W. BOYDEN, *Pres.*, 4; T. W. TOWNEND, *Con. Sec.*, 2; A. HANDS, *Cor. Sec.*, 3; H. T. MAWSON, Esq., *Con. Tr.*, 13; Revs. R. BUSHELL, *Gen. Mis. Sec.*, 10; R. Abercrombie, M.A., 3; J. Adcock, 9; S. S. Barton, 18; R. Chew, 19; J. Garside, 11; W. Griffith, 12; A. Holliday, 7; W. M. Hunter, 2; J. Kirsop, 13; J. Mather, 10; R. D. Maud, 1; M. Miller, 19; J. Myers, 11; T. Newton, 8; J. S. Withington, 11; Messrs. R. Bird, 2; W. Butler, 7; J. Cuthbertson, 21; M. J. Hart, 2; W. H. Cozens-Hardy, J.P., 15; R. Lloyd, 6; R. G. Rows, 4; H. P. Vivian, 4.

1879 Revs. T. W. TOWNEND, *Pres.*, 3; J. ADCKOCK, *Con. Sec.*, 10; A. HANDS, *Cor. Sec.*, 4; H. T. MAWSON, Esq., *Con. Tr.*, 14; Revs. R. BUSHELL, *Gen. Mis. Sec.*, 11; S. S. Barton, 19; E. Boaden, 8; T. M. Booth, 8; W. Boyden, 5; R. Chew, 20; W. Griffith, 13; A. Holliday, 8; J. Kirsop, 14; J. Mather, 11; R. D. Maud, 2; M. Miller, 20; J. Myers, 12; T. Newton, 9; J. S. Withington, 12; Messrs. R. Bird, 3; W. Butler, 8; J. Green, 10; M. J. Hart, 3; W. H. Cozens-Hardy, J.P., 16; J. Higginbottom, 1; R. Lloyd, 7; R. G. Rows, 5; H. P. Vivian, 5.

1880 Revs. W. M. HUNTER, *Pres.*, 3; E. ASKEW, *Con. Sec.*, 1; A. HANDS, *Cor. Sec.*, 5; H. T. MAWSON, Esq., *Con. Tr.*, 15; Revs. R. BUSHELL, *Gen.*

*Mis. Sec.*, 12; R. Abercrombie, M.A., 4; J. Adcock, 11; S. S. Barton, 20; W. Boyden, 6; W. R. Brown, 16; R. Chew, 21; W. Griffith, 14; A. Holliday, 9; A. Jones, 2; J. Kirsop, 15; J. Mather, 12; R. D. Maud, 3; M. Miller, 21; J. Myers, 13; T. W. Townend, 4; J. S. Withington, 13; Messrs. R. Bird, 4; W. Butler, 9; J. R. Cuthbertson, 1; J. Green, 11; W. H. Cozens-Hardy, J.P., 17; R. Lloyd, 8; R. G. Rows, 6.

1881 Revs. R. CHEW, *Pres.*, 22; E. ASKEW, *Con. Sec.*, 2; R. ABERCROMBIE, M.A., *Cor. Sec.*, 5; T. WATSON, Esq., J.P., *Con. Tr.*, 1; Revs. J. ADCKOCK, *Gen. Mis. Sec.*, 12; E. Boaden, 9; S. S. Barton, 21; W. Boyden, 7; W. R. Brown, 17; J. C. Brewitt, 1; W. Griffith, 15; A. Holliday, 10; W. M. Hunter, 4; A. Hands, 6; J. Kirsop, 16; J. Myers, 14; M. Miller, 22; T. Newton, 10; T. W. Townend, 5; J. S. Withington, 14; Messrs. W. Butler, 10; J. R. Cuthbertson, 2; J. Green, J.P., 12; W. H. Cozens-Hardy, J.P., 18; M. J. Hart, 4; R. Lloyd, 9; R. G. Rows, 7; M. Shadford, 1.

1882 Revs. A. HANDS, *Pres.*, 7; E. ASKEW, *Con. Sec.*, 3; T. SHERWOOD, *Cor. Sec.*, 1; T. Watson, Esq., J.P., *Con. Tr.*, 2; Revs. J. ADCKOCK, *Gen. Mis. Sec.*, 13; R. Abercrombie, M.A., 6; S. S. Barton, 22; E. Boaden, 9; T. M. Booth, 9; W. R. Brown, 18; J. C. Brewitt, 2; R. Chew, 23; W. Griffith, 16; W. M. Hunter, 5; A. Jones, 3; J. Kirsop, 17; J. Mather, 13; M. Miller, 23; J. Myers, 15; C. Ogden, 1; T. W. Townend, 6; J. S. Withington, 15; Messrs. W. Butler, 11; J. R. Cuthbertson, 3; J. Green, J.P., 13; H. T. Mawson, 16; R. G. Rows, 8; M. Shadford, 2.

1883 H. T. MAWSON, Esq., *Pres.*, 17; Revs. E. ASKEW, *Con. Sec.*, 4; T. SHERWOOD, *Cor. Sec.*, 2; T. WATSON, Esq., J.P., *Con. Tr.*, 3; Revs. J. ADCKOCK, *Gen. Mis. Sec.*, 14; R. Abercrombie, M.A., 7; S. S. Barton, 23; T. M. Booth, 10; W. Boyden, 8; J. C. Brewitt, 3; W. R. Brown, 19; R. Chew, 24; A. Hands, 8; W. M. Hunter, 6; A. Jones, 4; J. Kirsop, 18; J. Mather, 14; J. Myers, 16; M. Miller, 24; C. Ogden, 2; W. R. Sunman, 1; T. W. Townend, 7; J. S. Withington, 16; Messrs. W. Butler, 12; J. Green, J.P., 14; R. G. Rows, 9; M. Shadford, 3; E. S. Snell, 1.

1884 Revs. E. ASKEW, *Pres.*, 5; T. SHERWOOD, *Con. Sec.*, 3; J. S. BALMER, *Cor. Sec.*, 1; T. WATSON, Esq., J.P., *Con. Tr.*, 4; Revs. J. ADCKOCK, *Gen. Mis. Sec.*, 15; E. BOADEN, *Ch. Sec.*, 11; A. HOLLIDAY, *P.T.I.*, 11; R. Abercrombie, M.A., 8; S. S. Barton, 24; T. M. Booth, 11; W. R. Brown, 20; R. Chew, 25; A. Hands, 9; W. M. Hunter, 7; A. Jones, 5; J. Mather, 15; J. Myers, 17; T. B. Saul, 1; T. W. Townend, 8; G. Turner, 1; J. S. Withington, 17; Messrs. R. Bird, 5; W. Butler, 13; W. H. Cozens-Hardy, J.P., 19; J. Green, J.P., 15; R. G. Rows, 10; H. T. Mawson, 18; M. Shadford, 4; T. Snape, 1; E. S. Snell, 2.

1885 Revs. A. JONES, *Pres.*, 6; T. SHERWOOD, *Con. Sec.*, 4; J. S. BALMER, *Cor. Sec.*, 2; T. WATSON, Esq., J.P., *Con. Tr.*, 5; Revs. J. ADCKOCK, *Gen. Mis. Sec.*, 16; E. BOADEN, *Ch. Sec.*, 12; A. HOLLIDAY, *P.T.I.*, 12; R. Abercrombie, M.A., 9; E. Askew, 6; S. S. Barton, 25; T. M. Booth, 12; R. Chew, 26; A. Hands, 10; W. M. Hunter, 8; J. Kirsop, 19; J. Mather, 16; J. Myers, 18; T. B. Saul, 2; T. W. Townend, 9; G. Turner, 2; J. S. Withington, 18; S. Wright, 1; Messrs. R. Bird, 6; W. H. Cozens-Hardy, J.P., 20; J. Green, J.P., 16; J. Higginbottom, J.P., 2; J. Nicholl, 4; R. G. Rows, 11; M. Shadford, 5; E. S. Snell, 3.

1886 Revs. T. SHERWOOD, *Pres.*, 5; J. S. BALMER, *Con. Sec.*, 3; G. TURNER, *Cor. Sec.*, 3; T. WATSON, Esq., M.P., *Con. Tr.*, 6; Revs. J.



ADCOCK, *Gen. Mis. Sec.*, 17; E. BOADEN, *Ch. Sec.*, 13; A. HOLLIDAY, *P.T.I.*, 13; R. Abercrombie, M.A., 10; S. S. Barton, 26; S. Beavan, 1; T. M. Booth, 13; R. Chew, 27; W. M. Hunter, 9; A. Jones, 7; J. Kirsop, 20; J. Myers, 19; T. B. Saul, 3; T. W. Townsend, 10; J. S. Withington, 19; Messrs. Ald. B. G. Baker, 1; W. Butler, 14; W. H. Cozens-Hardy, J.P., 21; Councillor J. H. Crosfield, J.P., 1; Ald. J. Green, J.P., 17; J. MacKinder, 1; J. Nicholl, 5; R. G. Rows, 12; T. Schofield, J.P., 5; M. Shadford, 6; E. S. Snell, 4.

1887 Revs. J. S. BALMER, *Pres.*, 4; G. TURNER, *Con. Sec.*, 4; M. T. MYERS, *Cor. Sec.*, 1; R. BIRD, Esq., J.P., *Con. Tr.*, 7; Revs. J. ADCOCK, *Gen. Mis. Sec.*, 18; E. BOADEN, *Ch. Sec.*, 14; A. HOLLIDAY, *P.T.I.*, 14; E. Askew, 7; S. S. Barton, 27; R. Chew, 28; J. Cockin, 1; A. Crombie, 1; H. Holgate, 1; A. Jones, 8; Jabez King, 1; J. Kirsop, 21; J. Myers, 20; T. B. Saul, 4; T. Sherwood, 6; J. Swann Withington, 20; Messrs. Ald. Baker, 2; W. Butler, 15; W. H. Cozens-Hardy, J.P., 22; Coun. J. H. Crosfield, J.P., 2; Ald. Green, J.P., 18; Ald. Higginbottom, J.P., 3; R. G. Rows, 13; Ald. Schofield, J.P., 6; M. Shadford, 7; E. S. Snell, 5.

1888 Revs. T. WAKEFIELD, *Pres.*, 1; G. TURNER, *Con. Sec.*, 5; M. T. MYERS, *Cor. Sec.*, 2; R. BIRD, Esq., J.P., *Con. Tr.*, 8; Revs. J. ADCOCK, *Gen. Mis. Sec.*, 19; E. BOADEN, *Ch. Sec.*, 15; A. HOLLIDAY, *P.T.I.*, 15; R. Abercrombie, M.A., 11; E. Askew, 8; J. S. Balmer, 5; S. S. Barton, 28; R. Chew, 29; J. Cockin, 2; A. Crombie, 2; Jabez King, 2; J. Myers, 21; T. B. Saul, 5; T. Sherwood, 7; J. Swann Withington, 21; Messrs. Ald. Baker, 3; W. Butler, 16; W. H. Cozens-Hardy, J.P., 23; J. H. Crosfield, J.P., 3; Ald. Green, J.P., 19; Ald. Higginbottom, J.P., 4; R. G. Rows, 14; Ald. Schofield, J.P., 7; M. Shadford, 8; T. Snape, 2; E. S. Snell, 6.

1889 Revs. R. ABERCROMBIE, M.A., *Pres.*, 12; M. T. MYERS, *Con. Sec.*, 3; J. TRUSCOTT, *Cor. Sec.*, 1; R. BIRD, Esq., J.P., *Con. Tr.*, 9; Revs. G. TURNER, *Gen. Mis. Sec.*, 6; E. BOADEN, *Ch. Sec.*, 16; A. HOLLIDAY, *P.T.I.*, 16; A. JONES, *Sec. of Evan. Mis.*, 9; J. ADCOCK, *Ex-Gen. Mis. Sec.*, 20; J. S. Balmer, 6; J. F. Barnard, 1; S. S. Barton, 29; R. Brewin, 1; H. T. Chapman, 1; R. Chew, 30; J. Cockin, 3; A. Crombie, 3; Jabez King, 3; J. Myers, 22; T. Sherwood, 8; T. Wakefield, 2; J. Swann Withington, 22; Messrs. W. Butler, 17; J. H. Crosfield, J.P., 4; Ald. Green, J.P., 20; W. H. Cozens-Hardy, J.P., 24; Ald. W. H. Hart, J.P., 6; R. G. Rows, C.C., 15; Ald. Schofield, J.P., 8; Ald. Shadford, 9; T. Snape, C.C., 3; E. S. Snell, 7.

1890 Revs. M. T. MYERS, *Pres.*, 4; J. TRUSCOTT, *Con. Sec.*, 2; S. WRIGHT, *Cor. Sec.*, 1; R. BIRD, Esq., J.P., *Con. Tr.*, 10; Revs. G. TURNER, *Gen. Mis. Sec.*, 7; E. BOADEN, *Ch. Sec.*, 17; A. HOLLIDAY, *P.T.I.*, 17; A. JONES, *Sec. Evan. Mis.*, 10; R. Abercrombie, M.A., 12; J. S. Balmer, 7; J. F. Barnard, 2; R. Brewin, 2; J. C. Brewitt, 4; D. Brook, M.A., B.C.L., 1; H. T. Chapman, 2; R. Chew, 31; J. Cockin, 4; A. Crombie, 4; H. Holgate, 2; G. Lowndes, 1; W. Redfern, 1; J. Swann Withington, 22; Messrs. J. G. Addison, 1; J. H. Crosfield, J.P., 5; Ald. R. Ellis, J.P., C.C., 1; Coun. Longbottom, 1; R. G. Rows, C.C., 16; Ald. Schofield, J.P., 9; Ald. Shadford, 10; T. Snape, C.C., 4; E. S. Snell, 8; C. Wardlow, 1.

1891 Revs. M. T. MYERS, *Pres.*, 5; J. TRUSCOTT, *Con. Sec.*, 3; S. WRIGHT, *Cor. Sec.*, 2; R. BIRD, Esq., J.P., *Con. Tr.*, 11; Revs. G. TURNER,

*Gen. Mis. Sec.*, 8; E. BOADEN, *Ch. Sec.*, 18; A. HOLLIDAY, *P.T.I.*, 18; A. JONES, *Sec. Evan. Mis.*, 11; R. Abercrombie, M.A., 13; J. S. Balmer, 8; R. Brewin, 3; J. C. Brewitt, 5; D. Brook, M.A., B.C.L., 2; H. T. Chapman, 3; R. Chew, 32; J. Cockin, 5; A. Crombie, 5; H. Holgate, 3; G. Lowndes, 2; W. Redfern, 2; T. Wakefield, F.R.G.S., F.R.Hist.S., 3; J. Swann Withington, 23; Messrs. J. G. Addison, 2; J. H. Crosfield, J.P., 6; Ald. R. Ellis, J.P., C.C., 2; Coun. Longbottom, 2; R. G. Rows, C.C., 17; Ald. Schofield, J.P., 10; Ald. Shadford, 11; T. Snape, C.C., 5; E. S. Snell, 9.

1892 Revs. J. TRUSCOTT, *Pres.*, 4; W. R. SUNMAN, *Con. Sec.*, 1; S. WRIGHT, *Cor. Sec.*, 3; R. BIRD, Esq., J.P., *Con. Tr.*, 12; Revs. G. TURNER, *Gen. Mis. Sec.*, 9; E. BOADEN, *Ch. Sec.*, 19; A. HOLLIDAY, *P.T.I.*, 19; R. Abercrombie, M.A., 14; E. Askew, 9; J. S. Balmer, 9; R. Brewin, 4; H. T. Chapman, 4; R. Chew, 33; J. Cockin, 6; T. J. Dickinson, 1; M. T. Myers, 6; C. Ogden, 1; W. Redfern, 3; T. B. Saul, 6; T. Sherwood, 9; J. Swann Withington, 24; Messrs. J. G. Addison, 3; Ald. W. H. Hart, J.P., 7; Coun. Longbottom, 3; H. T. Mawson, 19; R. G. Rows, C.C., 18; Ald. T. Schofield, J.P., 11; Ald. Shadford, 12; Ald. T. Snape, M.P., 6; E. S. Snell, 10.

1893 Revs. S. WRIGHT, *Pres.*, 4; W. R. SUNMAN, *Con. Sec.*, 2; H. T. CHAPMAN, *Cor. Sec.*, 5; R. BIRD, Esq., J.P., *Con. Tr.*, 13; G. TURNER, *Gen. Mis. Sec.*, 10; E. BOADEN, *Ch. Sec.*, 20; A. HOLLIDAY, *P.T.I.*, 20; R. Abercrombie, M.A., 15; R. E. Abercrombie, 1; E. Askew, 10; J. S. Balmer, 10; R. Brewin, 5; D. Brook, M.A., B.C.L., 3; R. Chew, 34; J. Cockin, 7; A. Crombie, 6; T. J. Dickinson, 2; M. T. Myers, 7; C. Ogden, 2; W. Redfern, 4; T. B. Saul, 7; T. Sherwood, 10; J. Truscott, 5; J. Swann Withington, 25; Messrs. J. G. Addison, 4; Ald. W. H. Hart, J.P., 8; Ald. Longbottom, J.P., 4; R. G. Rows, C.C., 19; Ald. Schofield, J.P., 12; Ald. Shadford, 13.

1894 Alderman J. DUCKWORTH, Esq., J.P., *Pres.*, 1; Revs. W. R. SUNMAN, *Con. Sec.*, 3; H. T. CHAPMAN, *Cor. Sec.*, 6; Ald. W. H. HART, J.P., *Con. Tr.*, 9; Revs. G. TURNER, *Gen. Mis. Sec.*, 11; E. BOADEN, *Ch. Sec.*, 21; A. HOLLIDAY, *P.T.I.*, 21; R. Abercrombie, M.A., 16; J. S. Balmer, 11; R. Chew, 35; J. Cockin, 8; T. J. Dickinson, 3; A. Hands, 11; M. T. Myers, 8; T. B. Saul, 8; T. Sherwood, 11; T. W. Townsend, 11; J. Truscott, 6; T. Wakefield, F.R.G.S., 4; J. Swann Withington, 26; S. Wright, 5; Messrs. J. G. Addison, 5; R. Bird, J.P., 14; Ald. Crosfield, J.P., 7; Coun. C. W. Daws, 1; Ald. Longbottom, J.P., 5; Coun. Mart, 1; R. G. Rows, J.P., C.C., 20; Ald. Schofield, J.P., 13; E. S. Snell, 11.

1895 Revs. W. R. SUNMAN, *Pres.*, 4; E. D. CORNISH, *Con. Sec.*, 1; J. C. BREWITT, *Cor. Sec.*, 6; Ald. W. H. HART, Esq., J.P., *Con. Tr.*, 10; Revs. H. T. CHAPMAN, *Gen. Mis. Sec.*, 7; E. BOADEN, *Ch. Sec.*, 22; R. Abercrombie, M.A., 17; J. S. Balmer, 12; J. Cockin, 9; T. J. Dickinson, 4; A. Hands, 12; A. Holliday, 22; Jabez King, 4; C. Ogden, 3; T. B. Saul, 9; T. Sherwood, 12; G. Turner, 12; T. Wakefield, F.R.G.S., 5; J. Swann Withington, 27; S. Wright, 5; Messrs. Ald. R. Bird, J.P., 15; Ald. J. H. Crosfield, J.P., 8; Coun. C. W. Daws, 2; Ald. J. Duckworth, J.P., 2; Ald. B. Longbottom, J.P., 6; Coun. W. Mart, 2; Ald. T. Snape, 7; E. S. Snell, 11; R. G. Rows, J.P., C.C., 21.

1896 Revs. G. TURNER, *Pres.*, 13; E. D. CORNISH, *Con. Sec.*, 2; J. C. BREWITT, *Cor. Sec.*, 7; Ald. W. H. HART, Esq., J.P., *Con. Tr.*, 11;



Revs. H. T. CHAPMAN, *Gen. Mis. Sec.*, 8; E. BOADEN, *Ch. Sec.*, 23; F. Bavin, 1; J. S. Balmer, 13; J. Cockin, 10; A. Holliday, 23; C. Ogden, 4; W. Redfern, 5; T. Sherwood, 13; T. B. Saul, 10; W. R. Sunman, 5; T. W. Townend, 12; J. S. Withington, 28; S. Wright, 6; Messrs. J. G. Benson, 1; R. Bird, J.P., 16; Coun. C. W. Daws, 3; Ald. J. Duckworth, J.P., 3; Coun. W. Hardy, 1; Ald. B. Longbottom, J.P., 7; J. Mackinder, 2; Coun. Mart, 3; W. Penrose, J.P., 1; Ald. T. Snape, 8; E. S. Snell, 12.

1897 Revs. R. SWALLOW, M.D., *Pres.*, 1; E. D. CORNISH, *Con. Sec.*, 3; J. C. BREWITT, *Cor. Sec.*, 8; Ald. W. H. HART, Esq., J.P., *Con. Tr.*, 12; Revs. H. T. CHAPMAN, *Gen. Mis. Sec.*, 9; E. BOADEN, *Ch. Sec.*, 24; D. Brook, M.A., D.C.L., 4; T. Sherwood, *P.T.I.*, 14; R. Abercrombie, M.A., 18; J. S. Balmer, 14; F. Bavin, 2; R. Brewin, 6; J. Cockin, 11; H. Holgate, 4; Jabez King, 5; F. Marrs, 1; C. Ogden, 5; T. B. Saul, 11; W. R. Sunman, 6; G. Turner, 14; T. W. Townend, 13; A. J. Walkden, 1; J. S. Withington, 29; Messrs. R. Bird, J.P., 17; Ald. J. Duckworth, 4; T. H. Fleming, 1; J. T. Lindley, 1; Ald. B. Longbottom, J.P., 8; R. G. Rows, J.P., C.C., 22; Ald. T. Snape, J.P., 9; E. S. Snell, 13; C. Wardlow, 2.

1898 Revs. E. D. CORNISH, *Pres.*, 4; J. C. BREWITT, *Con. Sec.*, 9; JABEZ KING, *Cor. Sec.*, 6; Ald. W. H. HART, Esq., J.P., *Con. Tr.*, 13; Revs. H. T. CHAPMAN, *Gen. Mis. Sec.*, 10; E. BOADEN, *Ch. Sec.*, 25; T. Sherwood, *P.T.I.*, 15; R. Abercrombie, M.A., 19; J. S. Balmer, 15; Dr. Brook, M.A., 5; J. Cockin, 12; T. J. Dickinson, 5; J. Kirsop, 22; F. Marrs, 2; T. B. Saul, 12; W. L. Smith, 1; W. R. Sunman, 7; T. W. Townend, 14; A. J. Walkden, 2; S. Walmsley, 1; G. Whaite, 1; J. Swann Withington, 30; Messrs. R. Bird, J.P., 18; Coun. Chippendale, 1; J. Duckworth, M.P., 5; J. T. Lindley, 2; R. G. Rows, J.P., 23; T. Snape, J.P., 10; E. S. Snell, 14; B. Vickers, 1; C. Wardlow, 3.

### FOREIGN MISSIONARY COMMITTEE.

THIS Committee came into existence in 1860 to relieve the labours and responsibilities of the Connexional Committee, and to secure the still more efficient management and extension of Foreign Missions. It is entrusted with the direction and management of all Missions outside Great Britain and Ireland, and is responsible only to the Annual Assembly, to which its proceedings are reported from year to year for confirmation or otherwise.

The Foreign Missionary Committee consists of the Connexional Officers, General Missionary Secretary, Chapel Secretary, Editor of the *Missionary Echo*, and thirteen other brethren, one from each District, who are elected by ballot. The thirteen brethren having the highest number of votes are members of the Committee. No member of the Connexional

Committee is eligible for election as a member of the Missionary Committee.

The following is the Annual List of the Members of this Committee from the time of its formation:—

1860 Revs. T. HACKING, *Pres.*, 1; M. BAXTER, *Con. Sec.*, 1; J. COLMAN, *Cor. Sec.*, 1; W. HOWE, Esq., *Con. Tr.*, 1; Revs. R. ECKETT, *Mis. Sec.*, 1; T. Newton, 1; Messrs. C. Cheetham, 1; T. Cuthbertson, 1; W. Dixon, 1; A. Goold, 1; W. Rinder, 1; G. Swallow, Jun., 1; J. B. Vickers, 1.

1861 Revs. S. S. BARTON, *Pres.*, 1; J. COLMAN, *Con. Sec.*, 2; T. A. BAYLEY, *Cor. Sec.*, 1; C. CHEETHAM, Esq., *Con. Tr.*, 2; Revs. R. ECKETT, *Mis. Sec.*, 2; W. Dawson, 1; J. Mather, 1; J. Myers, 1; Messrs. C. Carr, 1; J. Green, 1; T. Hirst, 1; J. Petrie, 1; J. B. Vickers, 2; D. Whitehead, 1.

1862 Revs. W. REED, *Pres.*, 1; J. COLMAN, *Con. Sec.*, 3; J. GUTTRIDGE, *Cor. Sec.*, 1; C. CHEETHAM, Esq., *Con. Tr.*, 3; Revs. S. S. BARTON, *Mis. Sec.*, 2; J. Garside, 1; J. Myers, 2; Messrs. C. Carr, 2; T. Hirst, 2; D. King, 1; J. Petrie, 2; J. B. Vickers, 3; D. Whitehead, 2; D. Yewdall, 1.

1863 Revs. J. GUTTRIDGE, *Pres.*, 2; J. COLMAN, *Con. Sec.*, 4; T. HACKING, *Cor. Sec.*, 2; C. CHEETHAM, Esq., *Con. Tr.*, 4; Revs. S. S. BARTON, *Mis. Sec.*, 3; W. R. Brown, 1; W. Dawson, 2; Messrs. J. Chipchase, 1; T. Cuthbertson, 2; T. Hirst, 3; G. Luckley, 1; J. Park, 1; J. Petrie, 3; P. Whitehead, 1.

1864 Revs. J. COLMAN, *Pres.*, 5; M. MILLER, *Con. Sec.*, 1; T. NEWTON, *Cor. Sec.*, 2; C. CHEETHAM, Esq., *Con. Tr.*, 5; Revs. S. S. BARTON, *Gen. Mis. Sec.*, 4; W. R. Brown, 2; J. Garside, 2; J. Mather, 2; Messrs. T. Cuthbertson, 3; J. Chipchase, 2; J. Haslam, 1; T. Hirst, 4; G. Luckley, 2; J. Petrie, 4.

1865 Revs. W. R. BROWN, *Pres.*, 3; M. MILLER, *Con. Sec.*, 2; T. NEWTON, *Cor. Sec.*, 3; C. CHEETHAM, Esq., *Con. Tr.*, 6; Revs. S. S. BARTON, *Gen. Mis. Sec.*, 5; J. Mann, 1; J. S. Withington, 1; Messrs. J. Benson, 1; J. Beads, 1; J. Chipchase, 3; T. Cuthbertson, 4; T. Hirst, 5; J. Petrie, 5; D. Yewdall, 2.

1866 Revs. T. NEWTON, *Pres.*, 4; R. CHEW, *Con. Sec.*, 1; J. KIRSOP, *Cor. Sec.*, 1; C. CHEETHAM, Esq., *Con. Tr.*, 7; Revs. S. S. BARTON, *Gen. Mis. Sec.*, 6; W. R. Brown, 4; W. Griffith, 1; J. Mann, 2; J. S. Withington, 2; Messrs. J. Chipchase, 4; T. Cuthbertson, 5; E. Kipling, 1; G. Luckley, 3; J. Petrie, 6.

1867 Revs. R. CHEW, *Pres.*, 2; J. MYERS, *Con. Sec.*, 3; J. KIRSOP, *Cor. Sec.*, 2; C. CHEETHAM, Esq., *Con. Tr.*, 8; Revs. S. S. BARTON, *Gen. Mis. Sec.*, 7; J. Adcock, 1; J. Mann, 3; J. S. Withington, 3; Messrs. T. Boddington, 1; J. Chipchase, 5; T. Cuthbertson, 6; E. Kipling, 2; O. Ormerod, 1; J. B. Sharpley, 1.

1868 Revs. M. MILLER, *Pres.*, 3; J. MYERS, *Con. Sec.*, 4; J. ADCOCK, *Cor. Sec.*, 2; C. CHEETHAM, Esq., *Con. Tr.*, 9; Revs. S. S. BARTON, *Gen. Mis. Sec.*, 8; W. R. Brown, 5; J. Colman, 6; J. Kirsop, 3; J. Mann, 4; J. Townend, 1; Messrs. T. Cuthbertson, 7; T. Hirst, 6; G. Luckley, 4; J. C. Yewdall, 1.

1869 Revs. J. MATHER, *Pres.*, 3; R. BUSHELL, *Con. Sec.*, 1; J. ADCOCK,



*Cor. Sec.*, 3; C. CHEETHAM, Esq., *Con. Tr.*, 10; Revs. S. S. BARTON, *Gen. Mis. Sec.*, 9; W. R. Brown, 6; E. Boaden, 1; A. Gilbert, 1; T. Newton, 5; J. Townend, 2; J. S. Withington, 4; Messrs. T. Cuthbertson, 8; G. Luckley, 5; H. T. Mawson, 1.

1870 Revs. J. MYERS, *Pres.*, 5; R. BUSHELL, *Con. Sec.*, 2; J. S. WITHINGTON, *Cor. Sec.*, 3; C. CHEETHAM, Esq., *Con. Tr.*, 11; Revs. S. S. BARTON, *Gen. Mis. Sec.*, 10; J. Guttridge, 3; T. Newton, 6; Messrs. B. G. Baker, 1; T. Cuthbertson, 9; J. Green, 2; G. Luckley, 6; H. T. Mawson, 2; T. Watson, 1; J. C. Yewdall, 2.

1871 Revs. E. BOADEN, *Pres.*, 2; J. S. WITHINGTON, *Con. Sec.*, 6; J. GARSIDE, *Cor. Sec.*, 3; H. T. MAWSON, Esq., *Con. Tr.*, 3; Revs. R. BUSHELL, *Gen. Mis. Sec.*, 3; J. Adcock, 4; S. S. Barton, 11; S. Macfarlane, 1; W. Reed, 2; Messrs. T. Cuthbertson, 10; W. H. Cozens-Hardy, 1; W. Hicks, 1; G. Luckley, 7; T. Watson, 2.

1872 Revs. J. S. WITHINGTON, *Pres.*, 7; J. ADCOCK, *Con. Sec.*, 5; J. GARSIDE, *Cor. Sec.*, 4; H. T. MAWSON, Esq., *Con. Tr.*, 4; Revs. R. BUSHELL, *Gen. Mis. Sec.*, 4; S. S. Barton, 12; T. M. Booth, 1; S. Macfarlane, 2; J. Myers, 6; T. Newton, 7; Messrs. C. Cheetham, 12; T. Cuthbertson, 11; G. Luckley, 8; T. Watson, 3.

1873 Revs. J. ADCOCK, *Pres.*, 6; A. HOLLIDAY, *Con. Sec.*, 1; J. GARSIDE, *Cor. Sec.*, 5; H. T. MAWSON, Esq., *Con. Tr.*, 5; Revs. R. BUSHELL, *Gen. Mis. Sec.*, 5; S. S. Barton, 13; Messrs. B. G. Baker, 2; C. Cheetham, 13; T. Cuthbertson, 12; R. Ellis, 1; J. Haslam, 2; W. Hicks, 2; G. Luckley, 9; T. Watson, 4.

1874 Revs. J. GARSIDE, *Pres.*, 6; A. HOLLIDAY, *Con. Sec.*, 2; T. M. BOOTH, *Cor. Sec.*, 2; H. T. MAWSON, Esq., *Con. Tr.*, 6; Revs. R. BUSHELL, *Gen. Mis. Sec.*, 6; S. S. Barton, 14; J. Guttridge, 4; J. Mather, 4; J. Myers, 7; Messrs. C. Cheetham, 14; T. Cuthbertson, 13; W. Hicks, 3; G. Luckley, 10; T. Watson, 5.

1875 Revs. J. KIRSOP, *Pres.*, 4; T. M. BOOTH, *Con. Sec.*, 3; W. BOYDEN, *Cor. Sec.*, 1; H. T. MAWSON, Esq., *Con. Tr.*, 7; Revs. R. BUSHELL, *Gen. Mis. Sec.*, 7; S. S. Barton, 15; J. Guttridge, 5; J. Mather, 5; J. Myers, 8; J. S. Withington, 8; Messrs. C. Cheetham, 15; T. Cuthbertson, 14; R. Ellis, 2; J. Haslam, 3; G. Luckley, 11; T. Watson, 6; J. C. Yewdall, 3.

1876 Revs. T. M. BOOTH, *Pres.*, 4; W. BOYDEN, *Con. Sec.*, 2; S. CHESTER, *Cor. Sec.*, 1; H. T. MAWSON, Esq., *Con. Tr.*, 8; Revs. R. BUSHELL, *Gen. Mis. Sec.*, 8; S. S. Barton, 16; E. D. Green, 1; J. Guttridge, 6; J. Mather, 6; T. Newton, 8; J. S. Withington, 9; Messrs. T. Boddington, 2; C. Cheetham, 16; J. R. Cuthbertson, 1; J. Green, 3; J. Haslam, 4; G. Luckley, 12.

1877 Revs. A. HOLLIDAY, *Pres.*, 3; W. BOYDEN, *Con. Sec.*, 3; T. W. TOWNEND, *Cor. Sec.*, 1; H. T. MAWSON, Esq., *Con. Tr.*, 9; Revs. R. BUSHELL, *Gen. Mis. Sec.*, 9; J. S. Balmer, 1; S. S. Barton, 17; S. Beavan, 1; E. Boaden, 3; J. Guttridge, 7; A. Hands, 1; T. Newton, 9; W. Reed, 3; C. Worboys, 1; Messrs. J. R. Cuthbertson, 2; J. Harley, 1; J. T. Iles, 1.

1878 Revs. W. BOYDEN, *Pres.*, 4; T. W. TOWNEND, *Con. Sec.*, 2; A. HANDS, *Cor. Sec.*, 2; H. T. MAWSON, Esq., *Con. Tr.*, 10; Revs. R. BUSHELL, *Gen. Mis. Sec.*, 10; E. Boaden, 4; T. M. Booth, 5; J. Guttridge, 8; Messrs. J. Beads, 2; T. Boddington, 3; C. Cheetham, 17; J. R.

Cuthbertson, 3; J. Haslam, 5; J. T. Iles, 2; T. Snape, 1; G. Swallow, 2; B. Waite, 1.

1879 Revs. T. W. TOWNEND, *Pres.*, 3; J. ADCOCK, *Con. Sec.*, 7; A. HANDS, *Cor. Sec.*, 3; H. T. MAWSON, Esq., *Con. Tr.*, 11; Revs. R. BUSHELL, *Gen. Mis. Sec.*, 11; R. Abercrombie, M.A., 1; R. Brewin, 1; W. R. Brown, 7; J. Garside, 7; J. Guttridge, 9; W. M. Hunter, 1; Messrs. T. Boddington, 4; C. Cheetham, 18; J. R. Cuthbertson, 4; R. Ellis, 3; T. Snape, 2; T. Watson, 7.

1880 Revs. W. M. HUNTER, *Pres.*, 2; E. ASKEW, *Con. Sec.*, 1; A. HANDS, *Cor. Sec.*, 4; H. T. MAWSON, Esq., *Con. Tr.*, 12; Revs. R. BUSHELL, *Gen. Mis. Sec.*, 12; J. ADCOCK, *Gen. Mis. Sec. Elect.*, 8; E. Boaden, 5; R. Brewin, 2; J. C. Brewitt, 1; J. Guttridge, 10; T. Newton, 10; W. Reed, 4; Messrs. J. B. Allen, 1; M. J. Hart, 1; J. T. Iles, 3; J. Nicholl, 1; G. Shadford, 1; T. Snape, 3; T. Watson, 8.

1881 Revs. R. CHEW, *Pres.*, 3; E. ASKEW, *Con. Sec.*, 2; R. ABERCROMBIE, M.A., *Cor. Sec.*, 2; T. WATSON, Esq., J.P., *Con. Tr.*, 9; Revs. J. ADCOCK, *Gen. Mis. Sec.*, 9; J. Guttridge, 11; A. Jones, 1; J. Mather, 7; R. D. Maud, 1; W. Micklethwaite, 1; C. Ogden, 1; C. Worboys, 2; Messrs. R. Bird, 1; R. Ellis, J.P., 4; J. Higginbottom, 1; J. Nicholl, 2; G. Shadford, 2; T. Snape, 4.

1882 Revs. A. HANDS, *Pres.*, 5; E. ASKEW, *Con. Sec.*, 3; T. SHERWOOD, *Cor. Sec.*, 1; T. WATSON, Esq., J.P., *Con. Tr.*, 10; Revs. J. ADCOCK, *Gen. Mis. Sec.*, 10; W. Boyden, 5; J. Dinsley, 1; J. Guttridge, 12; R. D. Maud, 2; W. Micklethwaite, 2; T. B. Saul, 1; Messrs. J. B. Allen, 2; R. Bird, 2; R. Ellis, J.P., 5; J. Harley, 2; J. Higginbottom, 2; J. Nicholl, 3; E. S. Snell, 1.

1883 H. T. MAWSON, Esq., *Pres.*, 13; Revs. E. ASKEW, *Con. Sec.*, 4; T. SHERWOOD, *Cor. Sec.*, 2; T. WATSON, Esq., J.P., *Con. Tr.*, 11; Revs. J. ADCOCK, *Gen. Mis. Sec.*, 11; J. Boyes, M.A., 1; A. Holliday, 4; W. Micklethwaite, 3; Messrs. R. Bird, 3; W. H. Cozens-Hardy, J.P., 2; R. Ellis, J.P., 6; Captain King, 1; R. Llyod, 1; G. Luckley, J.P., 13; J. Mackinder, 1; J. Nicholl, 4; T. Schofield, J.P., 1; R. Wildgoose, 1.

1884 Revs. E. ASKEW, *Pres.*, 5; T. SHERWOOD, *Con. Sec.*, 3; J. S. BALMER, *Cor. Sec.*, 2; T. WATSON, Esq., J.P., *Con. Tr.*, 12; Revs. J. ADCOCK, *Gen. Mis. Sec.*, 12; J. Boyes, M.A., 2; J. C. Brewitt, 2; J. Kirsop, 5; W. Micklethwaite, 4; M. T. Myers, 1; C. Ogden, 2; W. R. Sunman, 1; Messrs. Ald. B. G. Baker, 3; J. H. Crosfield, 1; R. Lloyd, 2; J. Mackinder, 2; J. Nicholl, 5; T. Schofield, J.P., 2; T. Snape, 5.

1885 Revs. A. JONES, *Pres.*, 2; T. SHERWOOD, *Con. Sec.*, 4; J. S. BALMER, *Cor. Sec.*, 3; T. WATSON, Esq., J.P., *Con. Tr.*, 13; Revs. J. ADCOCK, *Gen. Mis. Sec.*, 13; J. H. Allechurch, 1; J. Boyes, M.A., 3; H. T. Chapman, 1; W. Micklethwaite, 5; C. Ogden, 3; W. R. Sunman, 2; Messrs. W. Butler, 1; R. Ellis, J.P., 7; G. Luckley, J.P., 14; Captain King, 2; H. T. Mawson, 14; T. Schofield, J.P., 3; T. Snape, 5.

1886 Revs. T. SHERWOOD, *Pres.*, 5; J. S. BALMER, *Con. Sec.*, 4; G. TURNER, *Cor. Sec.*, 1; T. WATSON, Esq., M.P., *Con. Tr.*, 14; Revs. J. ADCOCK, *Gen. Mis. Sec.*, 14; E. Askew, 6; J. C. Brewitt, 3; Jabez King, 1; J. Mather, 8; W. Micklethwaite, 6; S. Wright, 1; Messrs. R. Bird, 4; Ald. J. Higginbottom, J.P., 3; Captain King, 3; G. Luckley, J.P., 15; H. T. Mawson, 15; W. Penrose, 1; T. Snape, 6.

1887 Revs. J. S. BALMER, *Pres.*, 5; G. TURNER, *Con. Sec.*, 2; M. T.



MYERS, *Cor. Sec.*, 2; R. BIRD, Esq., J.P., *Con. Tr.*, 5; Revs. J. ADCOCK, *Gen. Mis. Sec.*, 15; R. Abercrombie, M.A., 3; R. E. Abercrombie, 1; J. C. Brewitt, 4; H. T. Chapman, 2; G. Lowndes, 1; Messrs. J. Duckworth, 1; Ald. Ellis, J.P., 8; J. T. Iles, 4; Captain King, 4; Coun. Longbottom, 1; H. T. Mawson, 16; W. Penrose, 2; T. Snape, 7.

1888 Revs. T. WAKEFIELD, *Pres.*, 1; G. TURNER, *Con. Sec.*, 3; M. T. MYERS, *Cor. Sec.*, 3; R. BIRD, Esq., J.P., *Con. Tr.*, 6; Revs. J. ADCOCK, *Gen. Mis. Sec.*, 16; R. E. Abercrombie, 2; R. Brewin, 1; J. C. Brewitt, 5; A. Hands, 6; A. Jones, 3; G. Lowndes, 2; Coun. Duckworth, 2; J. T. Iles, 5; Captain King, 5; Coun. Longbottom, 2; J. Mackinder, 1; H. T. Mawson, 17; Coun. Penrose, 3.

1889 Revs. R. ABERCROMBIE, M.A., *Pres.*, 4; M. T. MYERS, *Con. Sec.*, 4; J. TRUSCOTT, *Cor. Sec.*, 1; R. BIRD, Esq., J.P., *Con. Tr.*, 7; Revs. G. TURNER, *Gen. Mis. Sec.*, 4; J. ADCOCK, *Ex-Gen. Mis. Sec.*, 17; J. C. Brewitt, 6; W. H. C. Harris, 1; H. Holgate, 1; G. Lowndes, 3; W. R. Sunman, 3; Coun. Duckworth, 3; Ald. Higginbottom, J.P., 4; J. T. Iles, 6; Captain King, 6; Ald. Longbottom, 3; Ald. T. B. Lowe, 1; H. T. Mawson, 18; Coun. Penrose, 4.

1890 Revs. M. T. MYERS, *Pres.*, 5; J. TRUSCOTT, *Con. Sec.*, 2; S. WRIGHT, *Cor. Sec.*, 2; R. BIRD, Esq., J.P., *Con. Tr.*, 8; Revs. G. TURNER, *Gen. Mis. Sec.*, 5; J. W. Armstrong, 1; S. S. Barton, 18; J. Kirsop, 5; W. Micklethwaite, 7; T. B. Saul, 2; W. R. Sunman, 4; Messrs. J. G. Benson, 1; Coun. Duckworth, 4; W. H. Cozens-Hardy, J.P., 3; Ald. W. H. Hart, 1; H. T. Mawson, 19; Coun. Penrose, 5; Coun. B. Womersley, 1.

1891 Revs. M. T. MYERS, *Pres.*, 6; J. TRUSCOTT, *Con. Sec.*, 3; S. WRIGHT, *Cor. Sec.*, 3; R. BIRD, Esq., J.P., *Con. Tr.*, 9; Revs. G. TURNER, *Gen. Mis. Sec.*, 6; J. W. Armstrong, 2; E. Askew, 7; S. S. Barton, 19; Jabez King, 2; W. Micklethwaite, 8; W. R. Sunman, 5; Messrs. J. E. Balmer, 1; W. H. Butler, 1; Coun. J. Duckworth, 5; Ald. T. B. Lowe, 2; Coun. Penrose, 6; Coun. Shadforth, J.P., 1; C. Wardlow, 1.

1892 Revs. J. TRUSCOTT, *Pres.*, 4; W. R. SUNMAN, *Con. Sec.*, 6; S. WRIGHT, *Cor. Sec.*, 4; R. BIRD, Esq., J.P., *Con. Tr.*, 10; Revs. G. TURNER, *Gen. Mis. Sec.*, 7; J. W. Armstrong, 3; J. C. Brewitt, 7; A. Jones, 4; Jabez King, 3; J. Kirsop, 6; W. Micklethwaite, 9; T. Wakefield, F.R.G.S., 2; Messrs. J. E. Balmer, 2; W. H. Butler, C.C., 2; Coun. Duckworth, 6; Ald. Green, J.P., 4; Dr. R. J. Lloyd, M.A., 1; Councillor Penrose, 7.

1893 Revs. S. WRIGHT, *Pres.*, 5; W. R. SUNMAN, *Con. Sec.*, 7; H. T. CHAPMAN, *Cor. Sec.*, 3; R. BIRD, Esq., J.P., *Con. Tr.*, 11; Revs. G. TURNER, *Gen. Mis. Sec.*, 8; E. Abbott, 1; J. C. Brewitt, 8; J. Kirsop, 7; E. J. Travis, 1; T. Wakefield, F.R.G.S., 3; G. Whaithe, 1; Messrs. J. E. Balmer, 3; W. H. Butler, C.C., 3; C. Duckering, 1; Coun. Duckworth, J.P., 7; G. Ibberson, 1; Ald. T. Snape, M.P., 8; E. S. Snell, 2.

1894 Alderman DUCKWORTH, J.P., *Pres.*, 8; Revs. W. R. SUNMAN, *Con. Sec.*, 8; H. T. CHAPMAN, *Cor. Sec.*, 4; Ald. W. H. HART, Esq., J.P., *Con. Tr.*, 2; Revs. G. TURNER, *Gen. Mis. Sec.*, 9; J. Baxter, 1; J. C. Brewitt, 9; A. Crombie, 1; J. G. Hopkins, 1; Jabez King, 4; J. Kirsop, 8; E. J. Travis, 2; G. Whaithe, 2; S. Walmsley, 1; Messrs. J. E. Balmer, 4; Coun. Mordey, J.P., 1; Ald. M. Shadford, 1; Ald. T. Snape, M.P., 9.

1895 Revs. W. R. SUNMAN, *Pres.*, 9; E. D. CORNISH, *Con. Sec.*, 1;

J. C. BREWITT, *Cor. Sec.*, 10; Ald. W. H. HART, Esq., J.P., *Con. Tr.*, 3; Revs. H. T. CHAPMAN, *Gen. Mis. Sec.*, 5; G. TURNER, *Ex-Gen. Mis. Sec.*, 10; E. Abbott, 2; J. Kirsop, 9; T. W. Townsend, 4; A. J. Walkden, 1; Messrs. J. G. Addison, 1; J. Akers, 1; J. E. Balmer, 5; Coun. W. Hardy, 1; G. Ibberson, 2; T. Linton, J.P., 1; Coun. M. Mordey, J.P., 2; Ald. M. Shadford, 2; R. Turner, 1.

1896 Revs. G. TURNER, *Pres.*, 11; E. D. CORNISH, *Con. Sec.*, 2; J. C. BREWITT, *Cor. Sec.*, 11; Ald. W. H. HART, Esq., J.P., *Con. Tr.*, 4; Revs. H. T. CHAPMAN, *Gen. Mis. Sec.*, 6; R. Abercrombie, M.A., 5; J. G. Hopkins, 2; J. T. Oliver, 1; J. Truscott, 5; A. J. Walkden, 2; T. Wakefield, 4; Messrs. J. G. Addison, 2; J. Akers, 2; C. Duckering, 2; Coun. Mordey, J.P., 3; G. Ibberson, 3; R. G. Rows, J.P., C.C., 1; R. Turner, 2.

1897 Revs. R. SWALLOW, M.D., *Pres.*, 1; E. D. CORNISH, *Con. Sec.*, 3; J. C. BREWITT, *Cor. Sec.*, 12; Ald. W. H. HART, Esq., J.P., *Con. Tr.*, 5; Revs. H. T. CHAPMAN, *Gen. Mis. Sec.*, 7; J. Kirsop, 10; E. Abbott, 3; J. Truscott, 6; James King, 1; T. Wakefield, 5; G. Whaithe, 3; S. Walmsley, 2; W. Vivian, 1; Messrs. J. Akers, 3; Coun. J. G. Addison, 3; G. Ibberson, 4; Coun. M. Mordey, J.P., 4; Coun. H. Toy, 1; R. Turner, 3.

1898 Revs. E. D. CORNISH, *Pres.*, 4; J. C. BREWITT, *Con. Sec.*, 13; JABEZ KING, *Cor. Sec.*, 5; Ald. W. H. HART, Esq., J.P., *Con. Tr.*, 6; H. T. CHAPMAN, *Gen. Mis. Sec.*, 8; E. Abbott, 4; F. Galpin, 1; W. H. C. Harris, 2; James King, 2; W. Micklethwaite, 10; J. B. Stoneman, 1; W. Vivian, 2; Messrs. J. Akers, C.C., 4; H. J. Hart, 1; G. Ibberson, 5; Ald. Longbottom, J.P., 4; Ald. Mordey, J.P., 5; R. Turner, 4.



## ANNUAL INCOME

Year.	England and Scotland.	Wales.	Ireland.	Hamburg.	
	£ s. d.	£ s. d.	£ s. d.	£ s. d.	
1837	847 16 5	..	..	..	1
1838	1,234 17 11	..	..	..	2
1839	1,226 12 11½	7 15 2	2 10 0	4 17 4	3
1840	1,303 13 10½	10 0 0	6 17 7	..	4
1841	1,423 15 8	9 18 9½	21 17 1½	14 4 2	5
1842	1,619 8 11	24 0 0	12 17 8½	58 11 6	6
1843	2,026 8 6	25 14 9	12 0 7	51 7 6	7
1844	1,990 16 9½	24 15 4½	13 11 0	43 17 2	8
1845	2,525 12 0	24 2 10½	23 16 2½	43 3 10	9
1846	2,380 2 7½	31 17 6½	14 2 9½	57 3 8	10
1847	2,021 18 5½	32 9 6	19 7 1½	50 14 9	11
1848	2,157 17 7	29 2 6	4 18 2	54 1 2	12
1849	3,000 10 1½	33 19 11½	6 12 3	49 7 7	13
1850	2,271 13 9½	29 3 9	6 15 5	49 1 2	14
1851	2,306 12 6½	27 0 0	7 4 6½	47 12 2	15
1852	2,026 6 5½	23 1 9	8 2 6	47 14 6	16
1853	2,231 12 1	23 8 9	7 11 0	49 10 11	17
1854	2,153 5 7	35 16 9	8 5 6	41 15 9	18
1855	2,099 11 11	41 15 5	6 18 6	9 19 5	19
1856	2,545 2 6	36 8 7½	..	..	20
1857	2,522 13 11	38 10 8	8 6 4	25 15 6	21
1858	2,913 8 2½	42 4 1	9 0 8	..	22
1859	4,671 13 4½	42 5 6	13 4 9	698 18 1	23
1860	4,437 10 9½	39 7 8½	10 16 9	..	24
1861	4,746 0 2½	38 10 0	9 4 6	..	25
1862	5,537 11 5	36 1 6	14 4 0	..	26
1863	5,969 2 10	36 11 6	13 1 6	..	27
1864	6,182 14 0	34 4 5	17 8 2	..	28
1865	6,606 19 11	30 5 8	18 12 6	..	29
1866	6,887 6 11	38 16 0	3 5 5	..	30
1867	7,554 10 10	32 2 6	..	..	31
1868	6,881 3 4	20 7 5	..	..	32
1869	7,277 2 5	21 6 0	9 13 11	..	33
1870	7,528 2 4	24 19 0	5 12 2	..	34
1871	7,707 16 9	24 15 6	..	CHINA.	35
1872	8,855 12 7½	28 16 5	315 19 8½	..	36
1873	9,217 1 6	28 5 10	..	10 8 4	37
1874	10,808 7 4	28 5 3	..	13 4 9	38
1875	10,919 7 9	28 9 1	..	13 4 9	39
1876	11,174 0 8	27 8 7	..	17 19 6	40
1877	12,077 16 1	28 3 8	..	15 4 2	41
1878	11,330 17 1½	23 6 9	EAST AFRICA.	7 13 4	42
1879	10,049 8 11	24 7 6	..	37 15 0	43
1880	10,451 0 5	21 7 0	1 17 2	56 3 6	44
1881	11,150 4 6	21 13 0	8 14 4	11 16 7	45
1882	9,389 2 0	20 13 6	26 3 0	35 10 0	46
1883	9,626 15 8	21 11 2	45 13 7	81 17 0	47
1884	11,524 6 0	21 4 4	88 4 6	56 17 6	48
1885	10,456 0 4	18 11 9	63 15 0	56 13 3	49
1886	10,614 9 1	17 13 2	38 12 3	50 7 11	50
1887	11,457 8 5	14 1 6	24 10 0	40 0 5	51
1888	10,401 5 9	16 16 2	27 16 0	42 10 11	52
1889	8,955 14 9	9 12 6	36 6 10	36 18 9	53
1890	9,873 2 1	13 0 9	28 16 6	28 3 3	54
1891	10,245 19 9	16 4 7	92 10 0	46 10 0	55
1892	9,975 11 1	18 12 5	28 0 0	94 2 0	56
1893	9,041 9 3	16 15 6	30 10 0	77 19 6	57
1894	8,711 16 0	14 14 0	35 10 0	154 15 2	58
1895	8,798 5 11	16 13 5	21 0 0	152 18 2	59
1896	9,602 3 1	16 13 5	44 0 0	165 5 0	60
1897	9,956 14 0	16 12 8	42 10 3	322 15 1	61
1898	11,595 1 5	20 0 6	49 9 5	594 0 0	62
					63
	402,376 16 7	1,520 13 4½	1,049 18 6½	2,919 11 11	64

## OF MISSION FUND.

	Jamaica.	Australia.	New Zealand.	West Africa.	TOTALS.
	£ s. d.	£ s. d.	£ s. d.	£ s. d.	£ s. d.
1	..	..	..	..	847 16 5
2	..	..	..	..	1,234 17 11
3	..	..	..	..	1,241 15 5½
4	..	..	..	..	1,320 11 5½
5	..	..	..	..	1,469 15 9½
6	..	..	..	..	1,714 18 1½
7	..	..	..	..	2,115 11 4
8	..	..	..	..	2,073 0 3½
9	..	..	..	..	2,616 14 11
10	..	..	..	..	2,483 6 8
11	12 15 10½	..	..	..	2,137 5 8½
12	10 7 6	..	..	..	2,256 6 11
13	13 3 7½	..	..	..	3,103 14 6½
14	21 5 8½	..	..	..	2,377 19 10½
15	..	..	..	..	2,388 9 3
16	..	..	..	..	2,105 5 2½
17	..	..	..	..	2,312 2 9
18	..	..	..	..	2,239 3 7
19	..	..	..	..	2,158 5 3
20	..	..	..	..	2,581 11 1½
21	..	..	..	..	2,596 6 5
22	..	..	..	..	2,964 12 11½
23	..	..	..	..	4,727 3 7½
24	..	..	..	..	4,487 15 3
25	650 12 6½	1,328 11 5	..	419 9 10½	7,192 8 6½
26	500 19 8½	965 10 8	..	481 16 9½	7,536 4 1½
27	962 9 5½	1,327 19 10	..	438 15 11	8,748 1 0½
28	736 11 2	914 7 2	..	476 15 10	8,362 0 9
29	818 19 8	892 5 2	..	364 11 4	8,731 14 3
30	590 4 5	1,359 4 0	446 1 3	375 17 10	9,700 15 10
31	691 13 3	1,249 0 0	185 11 0	339 10 9	10,052 8 4
32	725 17 5	1,155 18 10	250 0 0	475 12 6½	9,525 1 1
33	737 8 4	1,479 2 6	350 0 0	570 10 5	10,445 3 7
34	842 12 10	1,740 8 2	567 9 1	683 4 7	11,392 8 2
35	783 8 11	1,756 3 5	852 16 4	646 9 0	11,771 9 11
36	1,189 8 6	2,110 12 5	1,006 15 3	732 5 3	13,923 10 5½
37	1,265 4 3	2,251 14 2	956 11 6	819 8 10	14,548 14 5
38	1,332 9 0½	2,085 6 10	1,146 16 10	760 17 10½	16,175 7 11½
39	1,638 10 2	2,056 1 1	1,096 16 10	789 19 10	16,542 9 6
40	1,299 8 0½	2,266 13 0	1,424 10 7	852 10 9½	17,042 11 1½
41	1,039 12 4	2,297 19 1	2,261 4 7	736 10 7½	18,396 10 6½
42	1,037 18 7½	2,568 13 8½	2,150 4 6	741 17 0½	17,860 11 0½
43	1,171 11 8½	2,465 14 8½	2,200 12 11½	739 3 0½	16,688 13 4
44	1,131 0 5	2,744 0 4	2,158 10 0	728 3 9	17,292 3 1
45	924 3 5	2,797 10 2	2,155 9 0	873 3 11	17,042 14 11
46	1,119 8 0	3,254 9 8	2,150 0 0	1,008 8 0	17,003 14 2
47	1,485 9 4	3,325 3 7	2,150 0 0	951 14 1	17,688 4 5
48	1,642 11 7	3,508 15 7	2,050 0 0	1,019 0 3	19,910 19 9
49	1,846 1 5	3,589 5 7	3,408 19 6	1,053 6 6	20,492 13 4
50	2,036 5 9	3,979 10 10	3,547 10 0	963 19 8	21,248 8 8
51	1,507 10 3	4,887 19 0	3,587 1 4	853 6 10	21,876 17 9
52	1,524 0 5	4,132 19 11	3,607 12 6	1,274 19 0	21,028 0 8
53	1,376 0 1	4,998 19 4	3,633 11 5	1,382 18 0	20,430 1 8
54	1,406 14 1	5,839 13 10	3,642 3 3	1,273 5 2	21,009 18 11
55	1,778 3 4	5,929 18 0	3,325 10 4	849 15 2	22,284 11 2
56	1,859 17 1	5,830 16 10	3,562 18 7	1,411 6 1	22,771 4 1
57	1,600 16 10	5,830 16 10	3,555 9 3	1,277 3 7	21,451 0 9
58	1,341 18 4	5,830 16 10	3,620 19 5	1,383 19 6	21,094 9 3
59	1,607 1 9	5,830 4 10	3,663 17 11	1,709 11 11	21,799 13 11
60	1,579 8 6	5,830 4 10	3,553 17 11	1,747 16 11	22,539 9 8
61	2,387 4 7	..	..	1,802 13 5	14,028 10 0
62	1,014 2 5	..	..	1,833 13 2	14,906 6 11
63	..	..	..	Difference,	153 13 6½
64	47,240 10 8	109,912 12 2	68,199 1 1½	34,333 13 1½	667,706 10 0½



## ANNUAL EXPENDITURE

Year.	England and Scotland.	Wales.	Ireland.	Hamburg.	Jamaica.	
	£ s. d.	£ s. d.	£ s. d.	£ s. d.	£ s. d.	
1837	822 14 7	..	..	..	..	1
1838	864 1 7	..	..	..	..	2
1839	1,231 10 5½	25 0 0	43 0 0	134 9 10	317 15 7	3
1840	1,050 0 5	50 0 0	60 0 0	96 0 0	377 9 4	4
1841	1,246 6 6	50 0 0	60 0 0	117 13 8	..	5
1842	1,242 19 0½	60 0 0	59 14 8½	91 1 6	207 12 10	6
1843	1,788 5 0½	80 0 0	31 7 11	92 7 11	..	7
1844	1,767 1 3½	80 0 0	48 17 0	89 0 8	86 16 6	8
1845	1,980 17 7	80 0 0	50 5 10½	112 9 4	120 0 0	9
1846	2,088 13 8½	80 0 0	49 0 11½	117 3 8	105 0 0	10
1847	2,034 11 4½	100 0 0	50 16 7½	140 9 3	159 0 10½	11
1848	1,814 17 0½	100 0 0	38 7 4	175 8 2½	151 19 3	12
1849	1,664 4 9½	100 0 0	42 19 6	141 8 8	173 3 7½	13
1850	1,713 15 9	110 0 0	47 19 11	136 0 9	213 15 8½	14
1851	1,879 14 2	110 0 0	43 8 10½	137 1 6	225 0 0	15
1852	1,927 8 0	110 0 0	49 9 6	137 12 6	200 0 0	16
1853	1,999 2 7½	110 0 0	41 8 10	137 4 6	110 0 0	17
1854	1,810 4 2	61 13 8	44 19 6	136 3 0	130 0 0	18
1855	1,719 16 1	91 5 0	48 11 11	118 9 10	90 0 0	19
1856	1,742 5 5½	120 0 0	46 5 2	107 14 4½	100 0 0	20
1857	1,741 7 4½	130 0 0	66 0 6	157 13 11	322 0 0	21
1858	1,874 18 10	150 0 0	74 19 9½	50 11 2	375 0 0	22
1859	1,726 4 11½	170 0 0	71 2 2	..	540 0 0	23
1860	2,140 7 5½	170 0 0	70 1 5	2,426 9 3	1,426 12 6½	24
1861	2,318 19 8	180 0 0	69 18 6	..	863 17 6½	25
1862	2,296 0 5	180 0 0	71 13 7	CHINA.	1,096 4 2½	26
1863	2,361 8 4½	180 0 0	68 0 6	55 14 6	1,443 19 6	27
1864	3,147 8 1	180 0 0	70 8 5	590 11 6	1,562 16 2	28
1865	3,155 3 6	187 10 0	78 4 0	656 13 0	1,156 8 3	29
1866	3,566 2 6	196 2 0	94 4 0	311 17 0	1,243 5 4	30
1867	3,442 12 0	217 5 0	237 12 1	989 13 6	1,158 0 6	31
1868	4,048 6 8	224 12 6	142 5 10	116 7 11	1,187 1 10	32
1869	3,622 10 8	253 15 0	69 13 2	..	1,284 1 7	33
1870	3,006 2 10	253 1 8	27 5 0	..	1,092 13 2	34
1871	3,034 0 2	239 0 0	..	..	573 15 0	35
1872	3,450 0 9	220 0 0	..	..	1,984 16 9½	36
1873	3,560 13 3	217 0 0	..	..	2,035 8 0½	37
1874	3,823 19 2½	199 0 0	..	..	2,375 14 4½	38
1875	5,347 6 1½	204 16 6	..	..	2,401 14 2	39
1876	5,413 16 2½	193 10 7	..	..	1,942 15 4½	40
1877	6,187 16 11	184 7 6	..	..	1,524 16 8	41
1878	5,370 11 8	185 0 0	..	..	1,923 7 5	42
1879	4,208 7 1	185 0 0	..	..	1,864 7 8	43
1880	4,585 10 3	185 0 0	..	..	2,154 6 7½	44
1881	4,439 17 9	185 0 0	..	..	1,881 0 11	45
1882	5,003 16 2	185 0 0	..	..	3,084 9 11	46
1883	5,045 2 10	174 18 9	..	..	2,091 15 9	47
1884	4,356 7 9	165 12 6	..	..	2,283 14 0	48
1885	4,336 0 5	164 10 0	..	..	2,566 9 0	49
1886	4,288 13 4	169 10 0	..	..	1,806 16 5	50
1887	4,036 16 10	171 6 0	..	..	2,977 8 9	51
1888	3,943 18 1	134 11 3	..	..	2,909 12 9	52
1889	2,485 0 0	70 1 3	..	..	1,370 13 11	53
1890	3,733 17 1	89 5 0	..	..	1,483 14 8	54
1891	3,268 8 8	85 16 3	..	..	1,121 18 7	55
1892	2,945 11 5	87 10 0	..	..	2,252 16 8	56
1893	2,722 1 3	87 10 0	..	..	2,325 1 5	57
1894	2,544 3 8	87 10 0	..	..	2,776 8 0	58
1895	2,473 17 0	87 10 0	..	..	2,733 11 2	59
1896	2,471 0 9	87 10 0	..	..	2,532 13 5	60
1897	2,504 3 1	87 10 0	..	..	2,137 17 11	61
1898	2,753 2 5	87 10 0	..	..	2,834 5 6	62
					2,753 0 5	63
					3,017 11 7	64
					3,519 10 1	65
					2,194 6 4	66
					..	67
					..	68
					..	69
					..	70
					..	71
					..	72
					..	73
					..	74
					..	75
					..	76
					..	77
					..	78
					..	79
					..	80
					..	81
					..	82
					..	83
					..	84
					..	85
					..	86
					..	87
					..	88
					..	89
					..	90
					..	91
					..	92
					..	93
					..	94
					..	95
					..	96
					..	97
					..	98
					..	99
					..	100
					..	101
					..	102
					..	103
					..	104
					..	105
					..	106
					..	107
					..	108
					..	109
					..	110
					..	111
					..	112
					..	113
					..	114
					..	115
					..	116
					..	117
					..	118
					..	119
					..	120
					..	121
					..	122
					..	123
					..	124
					..	125
					..	126
					..	127
					..	128
					..	129
					..	130
					..	131
					..	132
					..	133
					..	134
					..	135
					..	136
					..	137
					..	138
					..	139
					..	140
					..	141
					..	142
					..	143
					..	144
					..	145
					..	146
					..	147
					..	148
					..	149
					..	150
					..	151
					..	152
					..	153
					..	154
					..	155
					..	156
					..	157
					..	158
					..	159
					..	160
					..	161
					..	162
					..	163
					..	164
					..	165
					..	166
					..	167
					..	168
					..	169
					..	170
					..	171
					..	172
					..	173
					..	174
					..	175
					..	176
					..	177
					..	178
					..	179
					..	180
					..	181
					..	182
					..	183
					..	184
					..	185
					..	186
					..	187
					..	188
					..	189
					..	190
					..	191
					..	192
					..	193
					..	194
					..	195
					..	196
					..	197
					..	198
					..	199
					..	200
					..	201
					..	202
					..	203
					..	204
					..	205
					..	206
					..	207
					..	208
					..	209
					..	210
					..	211
					..	212
					..	213
					..	214
					..	215
					..	216
					..	217
					..	218
					..	219
					..	220
					..	221
					..	222
					..	223
					..	224
					..	225
					..	226
					..	227
					..	228
					..	229
					..	230
					..	231
					..	232
					..	233
					..	234
					..	235
					..	236
					..	237
					..	238
					..	239
					..	240
					..	241
					..	242
					..	243
					..	244
					..	245
					..	246
					..	247
					..	248



## CONNEXIONAL AND INCIDENTAL EXPENSES FUND.

THIS Fund came into existence in 1875, and was designed, as its name indicates, to meet expenses of an incidental character, that could not, without seeming impropriety, be paid out of any other Connexional Fund. It has been fed, mainly, out of grants from the Book Room ; and occasionally from the Connexional Fund. In two cases, it has been enriched by legacies : one, in 1876, of £36, by Mr. M. Miller, of Nottingham ; and a second, in 1898, of £364, 17s. 2d., by Mr. T. Simpson, of Manchester.

It would afford no interest to give the income and expenditure of bygone years : we, therefore, content ourselves with furnishing the Balance-Sheet for 1898, when the Fund begins to assume larger proportions.

## BALANCE-SHEET, 1898.

<i>Dr.</i>	£	s.	d.	<i>Cr.</i>	£	s.	d.
To Balance, 1897 . . .	7	7	8	By Queen's Diamond Jubilee Address . . .	10	0	0
„ Book Room Grant, 1898 . . .	60	0	0	„ Written Examinations of Ministers and Local Preachers . . .	19	19	5
„ Loan from Mission Fund . . .	5	5	0	„ Examiners' Expenses . . .	0	15	0
„ Legacy of the late Mr. Thos. Simpson, Manchester . . .	364	17	2	„ Book Room for Blue Book . . .	19	12	6
				„ For Correcting Minutes . . .	5	5	0
				„ Balance in hand . . .	381	17	11
	£437	9	10		£437	9	10

THE COMMEMORATIVE FUND.

IN the history of the United Methodist Free Churches the year 1882 was memorable as the completion of the first quarter of a century since the Amalgamation between the two latest offshoots of Methodism—the Wesleyan Methodist Association, and the Wesleyan Reformers.

The year 1885 also was memorable as the Jubilee year of the Churches that constituted the Wesleyan Methodist Association.

The Origin and History of these Churches were deemed of sufficient moment to deserve commemoration. Accordingly, at the Bristol Annual Assembly of 1882, it was resolved that a Commemorative Fund be established, the scheme to be formally launched at the Assembly of 1883 in Rochdale, where in 1857 the Amalgamation was consummated. At first, the amount aimed at was £25,000; subsequently, as enthusiasm developed, it was fixed at £30,000. The effort was successful.

This Fund is now all but closed, only very small additions being made to it.

Amount promised . . . . .	£32,426	12	9
Do. realized up to 1898, . . . . .	30,111	8	7

In the regulations adopted, it was provided that subscriptions to the extent of one-half might be applied to local purposes, according to the will of the subscribers: payments to be made within five years from the date of the promise.

The amount received for Connexional purposes is appropriated to the following funds and in the following proportions, viz. :—

One-fourth to the Connexional and Mission Fund.

One-fourth to the Ministers' Superannuation and Beneficent Fund.

Three-sixteenths to the two Chapel Funds in equal amounts.  
One-eighth to the London Chapel Extension Fund.







## GENERAL BALANCE-SHEET, 1893-98.

Dr.	RECEIPTS.	£	s.	d.	Cr.	APPROPRIATIONS.	£	s.	d.
To Subscriptions, 1893	4425	5	11		For Foreign Missions—				
Do., 1894	2735	14	10		One-Half	4163	10	6	
Do., 1895	927	10	0		Home Missions—				
Do., 1896	292	10	1		Two-Fifths	3330	16	6	
Do., 1897	97	12	0		Chapel Relief Fund—				
Do., 1898	...				One-Tenth	832	14	0	
	8478	12	10			3327	1	0	
Less Working Expenses	151	11	10						
	8327	1	0						
To Special Subscription,					Shaw Church, Rochdale				
1896 . . . . .	100	0	0		(Special) . . . . .	100	0	0	
	£8427	1	0			£8427	1	0	

## GRANTS TO FOREIGN MISSIONS.

	£	s.	d.	£	s.	d.
Mendi Mission, West Africa . . . . .	3160	10	7			
Central America . . . . .	996	19	11			
Jamaica, Rev. W. Griffith . . . . .	6	0	0			
				4163	10	6

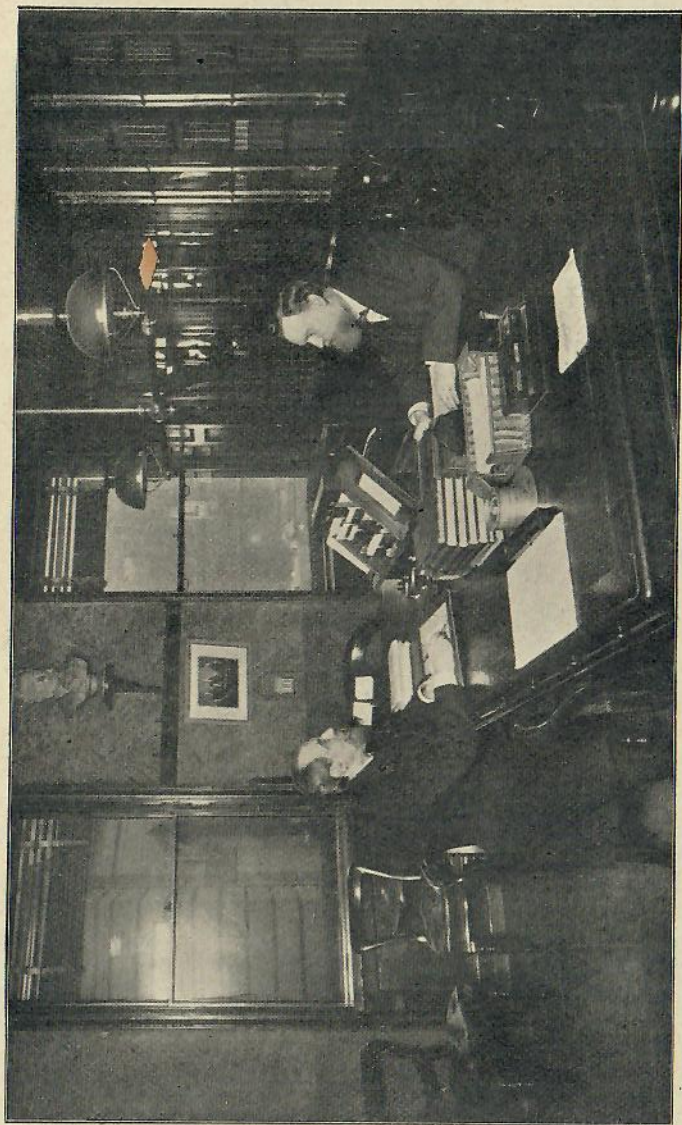
## GRANTS TO HOME MISSIONS.

Manchester, Lever Street . . . . .	768	15	0			
Horwich . . . . .	370	9	9			
Leeds, Lady Lane . . . . .	500	0	0			
London, East Ham . . . . .	200	0	0			
Clay Cross . . . . .	250	0	0			
London, Charlotte Street . . . . .	350	0	0			
Sheffield, Apple Street . . . . .	50	0	0			
Worcester . . . . .	296	16	6			
Balance . . . . .	544	15	3			
				3330	16	6

GRANT TO CHAPEL RELIEF FUND . . . . .	832	14	0			
Shaw Church, Rochdale (Special) . . . . .	100	0	0			
	£8427	1	0			



THE BOOK-ROOM, LONDON—COMMITTEE ROOM.



## THE BOOK-ROOM.

THE Book-Room is the publishing house of the United Methodist Free Churches. It was called into existence to supply Magazines, Hymn Books, Minutes of the Proceedings of the Annual Assemblies, and such other literature as might be calculated to promote the good of the Connexion.

The desirability of establishing this Institution was affirmed by the Assembly of 1837, and the project was remitted to the favourable consideration of the Connexional Committee. In 1838, thanks were accorded to Mr. Robert Eckett and Mr. James Jones for the services they had rendered on its behalf, and the former was appointed Treasurer, which office he filled to the day of his death, and the latter Editor and Book-Steward.

For many years the men filling these offices shared the responsibility of management, subject to the supervision of the Connexional Committee. A small Committee, however, was from time to time appointed at the Annual Assembly to examine the accounts of the past year, and report during its sittings.

In 1861, a Book-Room Committee was appointed to undertake the management. This was the beginning of a new era of vigour and prosperity. For a long time progress had been slow; now it became much more rapid. In 1850, when the first report of finances appears in the Minutes, the capital is put down at £1150. Add to this sum £200, that had been voted in five different grants of £40 each to the Mission Fund, and you have only £1350 as the entire profits of the first twelve years. A larger sum than this has been realised at times as the profits of one year only.



The profits from the commencement now amount to some £34,564, of which £26,178 have been appropriated to Connexional objects. The sum of £475 additional has been voted to the Superannuation and Beneficent Fund, and will be paid as soon as the repayment of Book-Room loans will permit. An account of the appropriation is furnished in the appended Financial Statement. By resolution of the Annual Assembly, one-half of the appropriated profits goes to the Superannuation and Beneficent Fund.

It is beyond the province of this record to give a detailed account of the business done by the Book-Room. Nor is this needful. The descriptive catalogues, sent to applicants, supply the fullest information. It may not, however, be amiss to give a few indications. There are:—

#### I. THE MONTHLY MAGAZINES AND THE WEEKLY NEWSPAPER.

*The Methodist Monthly*, 3d.; *The Missionary Echo*, 1d.; *The Free Methodist*, 1d.

#### II. THE NEW HYMN AND TUNE BOOKS.

These have been prepared at great labour and cost, and are from every point of view superior to anything of the kind ever issued by the Book-Room, and merit a place side by side with the best Hymn and Tune Books extant. They have served to improve the tone of public worship in Free Methodism, and will improve it yet more by their extended use in the churches.

##### *School Hymn and Tune Books.*

The School Hymn Book made its appearance in 1888, and the Hymn and Tune Book in the following year. The Hymn Book is issued in four different sizes and many different bindings, at prices ranging from 3d. to 4s. 6d. Hymns and Tunes combined are supplied in Staff Notation, and Sol-fa Notation, from 2s. 6d. to 10s. 6d.

##### *Church Hymn and Tune Books.*

The Church Hymn Book was published in 1889, in six different sizes and many different bindings, at prices from 1s. to 18s. The Tune Book was brought out in 1892, in Staff Notation, at from 4s. and 7s.; in Tonic Sol-fa Notation for 3s. 6d. Hymns and Tunes combined, in Staff Notation only, from 5s. to 12s. 6d.

##### *Hymns of Light and Life.*

These are intended for use in Societies of Christian Endeavour, Evangelistic Missions, Pleasant Sunday Afternoons, Prayer Meetings, Class Meetings, Temperance Meetings, and other Week-night Services. Prices 3d., 6d., and 1s. 6d. Supplementary Tune Book, 1s.

#### III. MISSIONARY REQUISITES.

Magic-Lantern slides illustrating Mission life on Foreign Stations are supplied, on hire. They comprise four sets of sixty each on China, East Africa, West Africa, and Mendiland. Descriptive lectures, prepared by the Revs. W. E. Soothill, J. Baxter, R. Brewin, and W. Vivian, are supplied. These have been highly appreciated. Information as to terms is, of course, furnished by the Book-Steward.

#### IV. CHURCH REQUISITES.

Such as Baptismal Registers, Certificates of Baptism, Church Registers, Notes of Removal, Class Books, Class Tickets, Sacramental Tickets, Circuit Schedules, Circuit Rules and Regulations, Minutes of the Annual Assembly, The Foundation Deed, The Model Deed, The New Reference Deed, &c., &c.

#### V. SUNDAY SCHOOL REQUISITES.

Reward Books, Teachers', Reference, and Text Bibles. These constitute a special line. British and Foreign Bible



Society Bibles, Oxford University Press Bibles, &c., &c. Library Grants to Free Methodist Sunday Schools at one-third of the published price for the first Grant, and subsequent Grants at one-half the published price. Application forms and all particulars sent, on inquiry, from the Book-Room.

#### VI. CHRISTIAN ENDEAVOUR REQUISITES.

Topic Cards, Pledge Cards, Constitution, &c., &c.

#### VII. TEMPERANCE REQUISITES.

Including Adult Pledge Books and Cards, Band of Hope Pledge Books and Cards, Fourfold Pledge Cards, Sunday School Pledge Cards, Crombie's Penny Stories for the Crowd, &c., &c.

#### VIII. STATIONERY DEPARTMENT.

Embracing Envelopes and Paper of various sizes and quality, Sermon Paper, Court Paper and Envelopes, Blotting Paper, Solid Blotting Pads, Pens, Pencils, &c., &c.

#### BOOK-ROOM OFFICERS AND COMMITTEE.

This Committee has varied somewhat in the number of its members. It is annually appointed by the Assembly. Until 1876, the retiring Committee nominated its successor; subject, of course, to alterations and additions. From 1877 to 1897, it consisted of the Editor, Book-Steward, and Treasurer, and ten other brethren elected by ballot from the London District. Now (1898) elections may be made from any District.



THE BOOK-ROOM, LONDON—REWARD-BOOK SALOON.



Years.	Treasurers.	Editors.	Book-Stewards.
1838-39	Rev. R. Eckett	Mr. J. Jones	Mr. J. Jones
1840	" R. Eckett	Rev. R. Eckett	Rev. G. Chesson
1841-45	" R. Eckett	" R. Eckett	E. Pearson
1846-49	" R. Eckett	" R. Eckett	Richard Abercrombie
1850-53	" R. Eckett	" R. Eckett	R. Eckett
1854-59	" R. Eckett	" M. Baxter	" M. Baxter
1860-61	" R. Eckett	" W. Reed	" W. Reed
1862-65	J. Cuthbertson, Esq.	" W. Reed	" W. Reed
1866-70	J. Cuthbertson, Esq.	" W. Reed	" W. Reed
1871-74	J. Cuthbertson, Esq.	" M. Miller	" T. Barlow, Asst. Bk. St.
1875-76	J. Cuthbertson, Esq.	" M. Miller	" T. Barlow
1877-78	J. Cuthbertson, Esq.	" J. Swann Withington	" T. Newton
		" R. Gray, Ed. of S.-S. Hive	" T. Newton
		" R. Brewin, Ed. of Welcome Words	" T. Newton
1879	E. S. Snell, Esq.	" J. S. Withington	" T. Newton
		" R. Gray, Ed. of S.-S. H.	" T. Newton
1880-82	E. S. Snell, Esq.	" R. Brewin, Ed. of W. W.	" A. Crombie
1883-84	E. S. Snell, Esq.	" J. S. Withington	" A. Crombie
		" R. Brewin, Ed. of W. W.	" A. Crombie
1885-91	E. S. Snell, Esq.	" R. Abercrombie, M.A.	" A. Crombie
		" R. Brewin, Ed. of W. W.	" A. Crombie
		" R. Abercrombie, M.A.	" A. Crombie
		" R. Brewin, Ed. of W. W.	" A. Crombie
		" J. S. Balmer, Ed. of Brooklet	" A. Crombie
1892	E. S. Snell, Esq.	" A. Crombie	" A. Crombie
		" J. M. Mather	" A. Crombie
		" J. Thornley, Ed. of Math. Monthly	" A. Crombie
1893	E. S. Snell, Esq.	" A. Crombie	" A. Crombie
		" J. Thornley, Ed. of Brooklet	" A. Crombie
		" J. Kirsop, Ed. of Missy. Echo	" A. Crombie
1894-98	E. S. Snell, Esq.	" A. Crombie	" A. Crombie
		" J. M. Mather	" A. Crombie
		" J. Kirsop, Ed. of Missy. Echo	" A. Crombie



1861 Revs. R. ECKETT, *Tr.*, 1; W. REED, *Ed. and Bk. St.*, 1; R. Bushell, 1; J. Colman, 1; E. Pearson, 1; Messrs. W. Best, 1; E. T. Broad, 1; J. Chipchase, 1; J. Cuthbertson, 1; T. Cuthbertson, 1; D. King, 1.

1862 J. CUTHBERTSON, *Esq., Tr.*, 2; Revs. W. REED, *Ed. and Bk. St.*, 2; T. Barlow, 1; R. Bushell, 2; J. Colman, 2; E. Pearson, 2; Messrs. W. Best, 2; E. T. Broad, 2; J. Carter, 1; J. Chipchase, 2; F. Cuthbertson, 1; T. Cuthbertson, 2; D. King, 2.

1863 J. CUTHBERTSON, *Esq., Tr.*, 3; Revs. W. REED, *Ed. and Bk. St.*, 3; R. Bushell, 3; Messrs. W. Best, 3; E. T. Broad, 3; J. Carter, 2; J. Chipchase, 3; F. Cuthbertson, 2; T. Cuthbertson, 3; D. King, 3.

1864 J. CUTHBERTSON, *Esq., Tr.*, 4; Revs. W. REED, *Ed. and Bk. St.*, 4; R. Bushell, 4; E. D. Green, 1; Messrs. W. Best, 4; E. T. Broad, 4; J. Carter, 3; J. Chipchase, 4; F. Cuthbertson, 3; T. Cuthbertson, 4; D. King, 4.

1865 J. CUTHBERTSON, *Esq., Tr.*, 5; Revs. W. REED, *Ed. and Bk. St.*, 5; R. Bushell, 5; S. Chester, 1; J. Kirsop, 1; I. Miller, 1; Messrs. W. Best, 5; E. T. Broad, 5; J. Carter, 4; J. Chipchase, 5; T. Cuthbertson, 5; D. King, 5.

1866 J. CUTHBERTSON, *Esq., Tr.*, 6; Revs. W. REED, *Ed. and Bk. St.*, 6; R. Bushell, 6; S. Chester, 2; J. Kirsop, 2; I. Miller, 2; Messrs. W. Best, 6; E. T. Broad, 6; J. Carter, 5; J. Chipchase, 6; T. Cuthbertson, 6; D. King, 6.

1867 J. CUTHBERTSON, *Esq., Tr.*, 7; Revs. W. REED, *Ed. and Bk. St.*, 7; R. Bushell, 7; S. Chester, 3; J. Kirsop, 3; I. Miller, 3; Messrs. W. Best, 7; E. T. Broad, 7; J. Carter, 6; J. Chipchase, 7; T. Cuthbertson, 7; D. King, 7; T. Waller, 1.

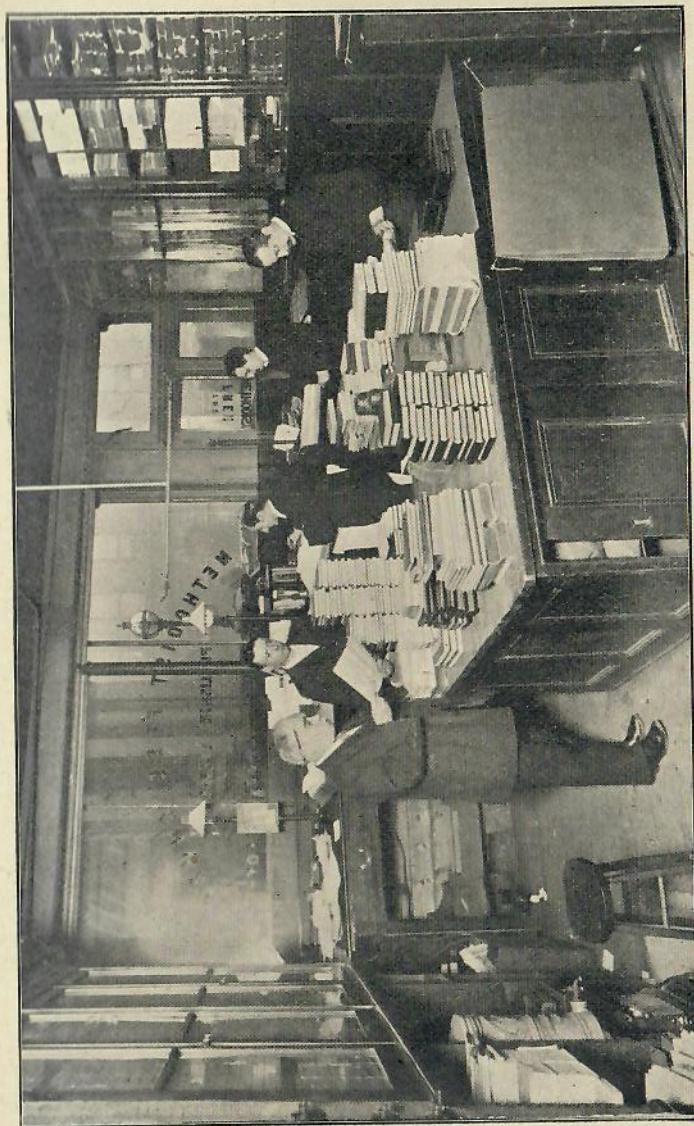
1868 J. CUTHBERTSON, *Esq., Tr.*, 8; Revs. W. REED, *Ed. and Bk. St.*, 8; J. Adcock, 1; A. Gilbert, 1; J. Kirsop, 4; Messrs. W. Best, 8; E. T. Broad, 8; J. Chipchase, 8; T. Cuthbertson, 8; T. Waller, 2.

1869 J. CUTHBERTSON, *Esq., Tr.*, 9; Revs. W. REED, *Ed. and Bk. St.*, 9; J. Adcock, 2; A. Gilbert, 2; T. Newton, 1; J. Swann Withington, 1; Messrs. W. Best, 9; E. T. Broad, 9; J. Carter, 7; J. Chipchase, 9; T. Cuthbertson, 9; D. King, 8; R. B. Salisbury, 1; T. Waller, 3.

1870 J. CUTHBERTSON, *Esq., Tr.*, 10; Revs. W. REED, *Ed. and Bk. St.*, 10; J. Adcock, 3; A. Gilbert, 3; T. Newton, 2; J. S. Withington, 2; Messrs. W. Best, 10; E. T. Broad, 10; J. Carter, 8; J. Chipchase, 10; T. Cuthbertson, 10; D. King, 9; R. B. Salisbury, 2; T. Waller, 4.

1871 J. CUTHBERTSON, *Esq., Tr.*, 11; Revs. M. MILLER, *Ed.*, 1; T. BARLOW, *Bk. St.*, 1; W. Embleton, 1; T. Hacking, 1; A. Jones, 1; I. Miller, 4; T. Newton, 3; J. S. Withington, 3; Messrs. W. Best, 11; J. Carter, 9; J. Chipchase, 11; T. Cuthbertson, 11; R. B. Salisbury, 3; E. S. Snell, 1; T. Waller, 5.

1872 J. CUTHBERTSON, *Esq., Tr.*, 12; Revs. M. MILLER, *Ed.*, 2; T. BARLOW, *Bk. St.*, 2; W. Boyden, 1; A. Jones, 2; I. Miller, 5; T. Newton, 4; Messrs. W. Best, 12; J. Carter, 10; J. Chipchase, 12; T. Cuthbertson, 12; R. B. Salisbury, 4; E. S. Snell, 2; T. Waller, 6.



THE BOOK-ROOM, LONDON—COUNTING-HOUSE AND STAFF.



1873 J. CUTHBERTSON, Esq., *Tr.*, 13; Revs. M. MILLER, *Ed.*, 3; T. BARLOW, *Bk. St.*, 3; W. Boyden, 2; A. Jones, 3; I. Miller, 6; T. Newton, 5; Messrs. W. Best, 13; J. Carter, 11; J. Chipchase, 13; T. Cuthbertson, 13; R. B. Salisbury, 5; E. S. Snell, 3; T. Waller, 7.

1874 J. CUTHBERTSON, Esq., *Tr.*, 14; Revs. M. MILLER, *Ed.*, 4; T. BARLOW, *Bk. St.*, 4; W. Boyden, 3; I. Miller, 7; T. Newton, 6; Messrs. J. Amphlett, 1; W. Best, 14; J. Carter, 12; J. Chipchase, 14; T. Cuthbertson, 14; G. Milne, 1; J. Pousty, 1; R. B. Salisbury, 6; E. S. Snell, 4; T. Waller, 8.

1875 J. CUTHBERTSON, Esq., *Tr.*, 15; Revs. M. MILLER, *Ed.*, 5; T. NEWTON, *Bk. St.*, 7; N. Fysh, 1; W. O. Lilley, 1; I. Miller, 8; C. Worboys, 1; Messrs. J. Amphlett, 2; W. Best, 15; J. Chipchase, 15; T. Cuthbertson, 15; G. Milne, 2; J. Pousty, 2; R. B. Salisbury, 7; E. S. Snell, 5; T. Waller, 9.

1876 J. CUTHBERTSON, Esq., *Tr.*, 16; Revs. M. MILLER, *Ed.*, 6; T. NEWTON, *Bk. St.*, 8; N. Fysh, 2; A. Keene, 1; G. Lowndes, 1; I. Miller, 9; C. Ogden, 1; C. Worboys, 2; Messrs. J. R. Cuthbertson, 1; Captain King, 10; R. B. Salisbury, 8; E. S. Snell, 6.

1877 J. CUTHBERTSON, Esq., *Tr.*, 17; Revs. T. NEWTON, *Bk. St.*, 9; R. E. Abercrombie, 1; N. Fysh, 3; G. Lowndes, 2; I. Miller, 10; C. Ogden, 2; S. Wright, 1; Messrs. J. R. Cuthbertson, 2; G. Milne, 3; R. B. Salisbury, 9; E. S. Snell, 7.

1878 J. CUTHBERTSON, Esq., *Tr.*, 18; Revs. T. NEWTON, *Bk. St.*, 10; R. E. Abercrombie, 2; G. Lowndes, 3; I. Miller, 11; M. T. Myers, 1; C. Worboys, 3; S. Wright, 2; Messrs. J. R. Cuthbertson, 3; Captain King, 11; R. B. Salisbury, 10; E. S. Snell, 8.

1879 E. S. SNELL, Esq., *Tr.*, 9; Revs. T. NEWTON, *Bk. St.*, 11; J. S. WITHINGTON, *Ed.*, 4; R. E. Abercrombie, 3; T. Barlow, 5; I. Miller, 12; M. T. Myers, 2; C. Worboys, 4; S. Wright, 3; Messrs. J. R. Cuthbertson, 4; Captain King, 12; D. Marshall, 1; R. B. Salisbury, 11.

1880 E. S. SNELL, Esq., *Tr.*, 10; Revs. T. NEWTON, *Bk. St.*, 12; J. S. WITHINGTON, *Ed.*, 5; R. E. Abercrombie, 4; A. Crombie, 1; I. Miller, 13; M. T. Myers, 3; J. Whittles, 1; C. Worboys, 5; Messrs. J. R. Cuthbertson, 5; Captain King, 13; D. Marshall, 2; R. B. Salisbury, 12.

1881 E. S. SNELL, Esq., *Tr.*, 11; Revs. T. NEWTON, *Bk. St.*, 13; R. E. Abercrombie, 5; A. Crombie, 2; T. Hacking, 2; I. Miller, 14; M. T. Myers, 4; J. Whittles, 2; C. Worboys, 6; Captain King, 14; Messrs. D. Marshall, 3; R. B. Salisbury, 13.

1882 E. S. SNELL, Esq., *Tr.*, 12; Revs. T. NEWTON, *Bk. St.*, 14; R. Abercrombie, M.A., 1; R. E. Abercrombie, 6; A. Crombie, 3; I. Miller, 15; M. T. Myers, 5; J. Whittles, 3; C. Worboys, 7; Captain King, 15; Messrs. D. Marshall, 4; R. B. Salisbury, 14.

1883 E. S. SNELL, Esq., *Tr.*, 13; Revs. A. CROMBIE, *Bk. St.*, 4; 1; ABERCROMBIE, M.A., *Ed.*, 2; R. E. Abercrombie, 7; James King, 1; I. Miller, 16; M. T. Myers, 6; T. Newton, 15; James Roberts (A), R. Captain King, 16; Messrs. D. Marshall, 5; R. B. Salisbury, 15; W. Sunman, 1.



1884 E. S. SNELL, Esq., *Tr.*, 14; Revs. A. CROMBIE, *Bk. St.*, 5; R. ABERCROMBIE, M.A., *Ed.*, 3; P. E. Abercrombie, 8; James King, 2; I. Miller, 17; M. T. Myers, 7; J. Roberts (A), 2; Messrs. J. R. Cuthbertson, 6; Captain King, 17; G. S. Knight, 1; D. Marshall, 6; R. B. Salisbury, 16.

1885 E. S. SNELL, Esq., *Tr.*, 15; Revs. A. CROMBIE, *Bk. St.*, 6; R. ABERCROMBIE, M.A., *Ed.*, 4; R. E. Abercrombie, 9; James King, 3; I. Miller, 18; M. T. Myers, 8; J. Roberts (A), 3; W. Trevail, 1; Captain King, 18; Messrs. G. S. Knight, 2; D. Marshall, 7; R. B. Salisbury, 17.

1886 E. S. SNELL, Esq., *Tr.*, 16; Revs. A. CROMBIE, *Bk. St.*, 7; R. ABERCROMBIE, M.A., *Ed.*, 5; James King, 4; I. Miller, 19; M. T. Myers, 9; J. Roberts (A), 4; W. Trevail, 2; Messrs. J. R. Cuthbertson, 7; Captain King, 19; G. S. Knight, 3; D. Marshall, 8; W. Sunman, 2.

1887 E. S. SNELL, Esq., *Tr.*, 17; Revs. A. CROMBIE, *Bk. St.*, 8; R. ABERCROMBIE, M.A., *Ed.*, 6; Jas. King, 5; I. Miller, 20; M. T. Myers, 10; J. Roberts (A), 5; C. Tregoning, 1; W. Trevail, 3; Messrs. J. R. Cuthbertson, 8; Captain King, 20; D. Marshall, 9; W. Sunman, 3.

1888 E. S. SNELL, Esq., *Tr.*, 18; Revs. A. CROMBIE, *Bk. St.*, 9; R. ABERCROMBIE, M.A., *Ed.*, 7; Jas. King, 6; M. T. Myers, 11; Jas. Roberts (A), 6; W. Trevail, 4; Messrs. J. Akers, 1; J. R. Cuthbertson, 9; Captain King, 21; G. S. Knight, 4; D. Marshall, 10; W. Sunman, 4.

1889 E. S. SNELL, Esq., *Tr.*, 19; Revs. A. CROMBIE, *Bk. St.*, 10; R. ABERCROMBIE, M.A., *Ed.*, 8; H. Codling, 1; I. Miller, 21; M. T. Myers, 12; J. Roberts (A), 7; T. B. Saul, 1; W. Trevail, 5; Messrs. J. Akers, 2; J. R. Cuthbertson, 10; Captain King, 22; D. Marshall, 11.

1890 E. S. SNELL, Esq., *Tr.*, 20; Revs. A. CROMBIE, *Bk. St.*, 11; R. ABERCROMBIE, M.A., *Ed.*, 9; H. Codling, 2; Jabez King, 1; I. Miller, 22; J. Roberts (A), 8; T. B. Saul, 2; R. Wilton, 1; Messrs. J. Akers, 3; J. R. Cuthbertson, 11; B. H. Goulden, 1; Captain King, 23.

1891 E. S. SNELL, Esq., *Tr.*, 21; Revs. A. CROMBIE, *Bk. St.*, 12; R. ABERCROMBIE, M.A., *Ed.*, 10; T. J. Cope, 1; Jabez King, 2; I. Miller, 23; J. Roberts (A), 9; T. B. Saul, 3; J. Wright, 1; Messrs. J. Akers, 4; J. R. Cuthbertson, 12; Captain King, 24; W. Mallinson, 1.

1892 E. S. SNELL, Esq., *Tr.*, 22; Revs. A. CROMBIE, *Bk. St.*, 13; J. M. MATHER, *Ed.*, 1; H. Codling, 3; T. J. Cope, 2; Jabez King, 3; G. Lowndes, 3; I. Miller, 24; J. T. Oliver, 1; T. B. Saul, 4; Messrs. J. Akers, 5; J. R. Cuthbertson, 13; Captain King, 25.

1893 E. S. SNELL, Esq., *Tr.*, 23; Revs. A. CROMBIE, *Bk. St.*, 14; J. M. MATHER, *Ed.*, 2; T. J. Cope, 3; G. Lowndes, 4; I. Miller, 25; J. T. Oliver, 2; T. B. Saul, 5; Messrs. J. Akers, 6; J. R. Cuthbertson, 14; Captain King, 26; G. S. Knight, 5; W. Mallinson, 2.

1894 E. S. SNELL, Esq., *Tr.*, 24; Revs. A. CROMBIE, *Bk. St.*, 15; J. M. MATHER, *Ed.*, 3; T. J. Cope, 4; F. J. Ellis, 1; G. Lowndes, 5; I. Miller, 26; T. B. Saul, 6; Messrs. J. Akers, 7; J. R. Cuthbertson, 15; Captain King, 27; G. S. Knight, 6; W. Mallinson, 3.

1895 E. S. SNELL, Esq., *Tr.*, 25; Revs. A. CROMBIE, *Bk. St.*, 16; J. M. MATHER, *Ed.*, 4; H. Codling, 4; T. J. Cope, 5; G. Lowndes, 6; I. Miller, 27; T. B. Saul, 7; J. Wright, 2; Messrs. J. Akers, 8; J. R. Cuthbertson, 16; G. S. Knight, 7; S. Wright, 1.

1896 E. S. SNELL, Esq., *Tr.*, 26; Revs. A. CROMBIE, *Bk. St.*, 17; J. M. MATHER, *Ed.*, 5; S. K. Hocking, 1; J. Kirsop, 5; I. Miller, 28; T. B. Saul, 8; J. Whittles, 4; J. Wright, 3; Messrs. J. Akers, 9; J. R. Cuthbertson, 17; G. S. Knight, 8; S. Wright, 2.

1897 E. S. SNELL, Esq., *Tr.*, 27; Revs. A. CROMBIE, *Bk. St.*, 18; J. M. MATHER, *Ed.*, 6; F. J. Ellis, 2; J. Kirsop, 6; I. Miller, 29; T. B. Saul, 9; J. Wright, 4; Messrs. J. Akers, 10; H. Chester, 1; J. R. Cuthbertson, 18; G. S. Knight, 9; S. Wright, 3.

1898 E. S. SNELL, Esq., *Tr.*, 28; Revs. A. CROMBIE, *Bk. St.*, 19; J. M. MATHER, *Ed.*, 7; Jas. Harrison, 1; Ira Miller, 30; J. Wright, 5; Messrs. Jno. Akers, 11; R. Bird, J.P., 1; J. R. Cuthbertson, 19; Ald. J. Duckworth, M.P., 1; G. S. Knight, 10; W. Mallinson, 4; S. Wright, 4.



# FINANCIAL STATEMENT.

Year.	Capital in previous year.	Profits.	APPROPRIATION OF PROFITS.										Totals applied to Connexional Purposes.
			Super-annuation Fund.	Chapel Relief Fund.	Chapel Loan Fund.	Training Institute.	Books for Ministers on Probation.	Ashville College.	Sunday School Libraries.	Various Purposes.			
	£ s. d.	£ s. d.	£	£ s. d.	£	£	£ s. d.	£	£	£ s. d.	£ s. d.	£ s. d.	
1839-62	...	3546 12 7½	...	...	...	...	...	...	...	...	200 0 0	200 0 0	
1863	3346 12 7½	656 14 3	...	...	...	...	...	...	...	...	50 0 0	50 0 0	
1864	3953 6 10½	621 10 8½	600	...	...	...	...	...	...	...	600 0 0	600 0 0	
1865	3974 17 7	877 13 4	750	...	...	...	...	...	...	...	750 0 0	750 0 0	
1866	4102 10 11	829 2 10	1050	...	...	...	...	...	...	...	1150 0 0	1150 0 0	
1867	3781 13 9	1181 3 5	250	...	...	...	...	...	...	...	240 4 6	490 4 6	
1868	4422 12 8	1152 5 7	250	...	300	...	...	...	...	...	77 2 9	680 10 3	
1869	4894 8 0	906 7 8	250	...	300	...	...	...	...	...	182 10 0	795 19 2	
1870	5004 16 6	1089 10 10	250	400 0 0	300	...	...	...	...	...	150 0 0	1162 2 6	
1871	4932 4 10	949 13 4	250	200 0 0	300	...	...	...	...	...	150 0 0	1038 3 10	
1872	5088 14 8	1174 11 10	250	300 0 0	300	...	...	...	...	...	445 15 0	445 15 0	
1873	5225 2 8	1238 0 9	100	100 0 0	100	100	45 15 0	...	...	...	1065 11	1065 11	
1874	6017 8 5	1125 8 8	250	569 7 11	...	200	45 15 0	...	...	...	580 18 0	580 18 0	
1875	6077 14 2	1031 0 8	150	150 0 0	100	150	30 19 0	...	...	...	815 0 0	815 0 0	
1876	6527 15 10	1354 9 6	200	150 0 0	150	200	40 0 0	...	...	...	980 0 0	980 0 0	
1877	7067 5 4	1201 10 11	200	200 0 0	150	200	30 0 0	200	...	...	1027 0 0	1027 0 0	
1878	7288 16 3	1337 4 0	200	200 0 0	100	250	45 0 0	200	...	...	156 9 5	1299 5 11	
1879	7599 0 3	1034 10 8	250	200 0 0	100	350	42 16 6	200	...	...	70 0 0	1400 0 0	
1880	7334 5 0	980 2 7	635	200 0 0	100	200	45 0 0	150	...	...	50 0 0	1042 0 0	
1881	4914 7 7	1222 9 5	347	200 0 0	100	200	45 0 0	100	...	...	50 0 0	1200 0 0	
1882	7094 17 0	1002 11 3	600	200 0 0	...	200	50 0 0	100	...	...	50 0 0	1000 0 0	
1883	6897 8 3	941 2 2	500	200 0 0	...	100	50 0 0	100	...	...	200 0 0	1100 0 0	
1884	6838 10 5	756 7 11	500	200 0 0	...	150	50 0 0	...	...	...	70 0 0	500 0 0	
1885	6194 18 4	406 10 10	250	80 0 0	...	60	40 0 0	...	...	...	223 1 11	443 1 11	
1886	5742 3 4	462 2 6	180	...	...	40	...	...	...	...	...	...	
			3549 7 11										

Hymn and Tune Books, Exs.		Hymn and Tune Books, Exs.									
1887	5761 3 11	523 16 1	212	...	...	15 0 0	...	80	117 0 0	424 0 0	...
1888	6266 17 6	339 5 11	154	431 3 9	...	24 0 0	...	80	50 0 0	739 3 9	...
1889	5979 9 8	393 8 8	...	227 11 11	...	24 0 0	...	80	50 0 0	381 11 11	...
1890	5991 6 5	1150 6 2	304	328 18 2	...	20 0 0	...	80	50 0 0	782 15 2	...
1891	6358 14 5	1802 14 3	170	224 1 0	...	10 0 0	...	80	80 0 0	564 1 0	...
1892	7611 15 2	624 8 8	193	73 19 3	...	33 0 0	...	80	80 0 0	459 19 3	...
1893	7733 2 1	625 11 4	195	490 12 8	...	35 0 0	...	80	80 0 0	880 12 8	...
		1776 6 9									
1894	7528 0 9	605 0 11	228	...	...	48 0 0	...	80	80 0 0	436 0 0	...
1895	7697 1 8	506 6 11	188	...	...	48 0 0	...	80	60 0 0	376 0 0	...
1896	7827 8 7	303 3 8	...	...	...	95 18 2	...	80	50 0 0	225 18 2	...
1897	7904 14 1	309 7 10	...	...	...	50 0 0	...	45	55 0 0	150 0 0	...
1898	8064 1 11	351 15 7	...	...	...	45 0 0	...	50	55 0 0	150 0 0	...
1899	8145 9 6	...	...	...	...	...	...	...	...	...	...
* Grants from Com- memorative Fund,		34,564 4 3	9906	5325 14 8	2400	2350	1268 10 2	1050	895	2983 8 7	26,178 13 5
		539 12 6								Capital,	8,145 9 6
1885, Stock Written off, £659 5 10 }		35,103 16 9									
1898, Do., £120 8 0 }		779 13 10									
		£34,324 2 11									£ 34,324 2 11

\* Grants from the Commemorative Fund were made as follows:—1887, £405, 17s. 6d.; 1888, £112, 10s.; 1891, £14, 7s. 6d.; 1892, £6, 17s. 6d.—Total, £539, 12s. 6d.



## CHAPELS AND CHAPEL FUNDS.

## CHAPEL RELIEF FUND.

THE outlines of the history of this Fund are soon given. In 1840, the Annual Assembly resolved: "That it be referred to the Connexional Committee to consider the best means to be adopted for establishing a Chapel Fund for rendering assistance to the Trustees of Chapels secured to the Connexion." In obedience to this injunction, the Committee prepared a series of resolutions, specifying reasons, and suggesting means for the establishment of such a fund; and laying down plans for its management. These resolutions were approved by the Assembly of 1841, and the Committee was directed to take such steps as might be needful for giving them effect.

No reference was made to the subject in the Minutes of the Assembly of 1842, but it was revived in 1843. The September Quarterly Meetings were "requested to make arrangements for public collections in the Chapels of their respective Circuits, and for aiding the Itinerant Preachers in obtaining private subscriptions in aid of this Fund." A Treasurer and Secretary were appointed; also a Chapel Committee consisting of six members, three ministers and three laymen. Seeing that collections were made during the year on behalf of the Fund, this may be considered the date at which it was established.

Until the Amalgamation in 1857 this Fund made some slight advancement; then, by mutual arrangement between the two Committees—the Committee of the Association, and the Committee of Reformers—the balance, consisting of £1035, was reserved for the benefit of Chapels belonging to the Association at the time of the Amalgamation, and a new Fund was commenced for the United Churches.

In 1863, the Report of the Original Chapel Fund disappears from the Minutes, and the assets and liabilities, which were about equal, were merged in the New Chapel Fund.

In the course of a few years, the sentiment of the Churches became ripe for more extended efforts. A Chapel Fund

income of from £200 to £300 a-year was felt to be discreditable and insufficient for Churches numbering nearly seventy thousand members. Accordingly, under the efficient leadership of the Chapel Secretary, steps were taken for the accomplishment of two purposes. The first purpose was that of increasing the income of the old fund—The Chapel Relief Fund. This end has to some extent been realised. For thirty years past the annual income from all sources has averaged over £690. 2nd. The formation of a new fund, called "The Chapel Loan Fund."

## THE CHAPEL LOAN FUND.

This Fund was projected about 1865. As plans and arrangements matured, it was resolved to raise a Fund of £10,000, to be advanced without interest to Trustees of Chapels secured to the Connexion, the loans to be repaid at the rate of ten per cent. per annum.

In 1868, the scheme was fairly on foot, and the report tells of Circuit contributions. In 1871, more than the amount aimed at was promised. At present (1898), the Capital of this Fund is nearly £14,000. The following are its sources of income:—

Circuit Contributions . . . . .	£7,637	12	4
Book Room Grants . . . . .	2,400	0	0
Commemorative Fund Grants . . . . .	1,911	12	6
Legacies . . . . .	1,860	5	6
<b>TOTAL . . . . .</b>	<b>£13,809</b>	<b>10</b>	<b>4</b>

The legacies include £1550 from the late Mr. A. Sharman, Sheffield; £179, 15s. 6d. from the late Mr. C. Allen, Hardwick Park, near Chesterfield; £100 from the late Mrs. Wardlow, Sheffield; £25 from the late Mr. J. Phythian, Manchester; and other smaller sums.

By rule, this Fund is to circulate once in every ten years, but as matter of fact, it has done this in less than seven years. It is therefore, in itself, and by the conditions of its operation, a most effectual instrument for the reduction of Trust debts. Since the establishment of the Fund, it has been the means, in conjunction with the Chapel Relief Fund, of reducing debt to the amount of £130,066, and saving about £5849 *per year* interest in perpetuity. This is most satisfactory.



## CHAPEL DEEDS.

In the early history of the denomination, it was found needful in the interests of churches, trustees, and the Connexion as a whole, that some Deed, which should as fully as possible conserve all interests, should be carefully drawn. Hence the first Deed, "*The Model Chapel Deed*," bears date 27th January, 1842; and the second Deed, "*The Deed of Reference*," but quoted as the "*Reference Deed*," is dated 1st November, 1865.

The following extracts from a letter addressed to the President of the Annual Assembly of 1865 by H. F. Lawes, Esq., Solicitor, Bristol, on the completion of the "*Reference Deed*," will serve as an exposition and defence of that Deed, and also of the "*Model Deed*;" for the principles and arrangements of both Deeds are nearly identical. The chief difference between them is that under the "*Reference Deed*" any person though not a church member may be a trustee, if appointed by the trustees, and approved by the Circuit Quarterly Meeting; whereas, under the "*Model Deed*," no one is eligible for trusteeship who is not a member of our Churches.

"The principal objects to be attained by any Deed of this nature are,—

- "I. *To secure Chapels to the United Methodist Free Churches in such a way as to prevent misappropriation in future years.*
- "II. *To allow the Trustees of each Chapel the greatest freedom of action in the management of the Trust without undue interference on the part of the Assembly and the Preachers.*
- "III. *To take special care that the Trustees shall have full protection against embarrassment and loss, particularly in cases where they have borrowed or advanced money in aid of the Trust, without taking a legal security.*

"A perusal of the Reference Deed will show that these requirements are fully met, and I think its spirit and letter entitle it to general adoption by our Churches.

"I. *As to the first object.*—The Deed provides for the due appointment of Preachers, and the proper conduct of Religious services according to the doctrines and usages of the United Methodist Free Churches, in such a way as to prevent, as far as possible, persons immoral in their character, or heterodox in their views of Christian truth, from ministering in our pulpits. In order, also, that the Connexion and each Circuit may have an interest in the well-being of the Trust, the senior Minister of the Circuit is allowed a vote at the Trustee Meetings, though he is not entitled *ex-officio* to be Chairman, nor will his absence affect the validity of the meeting.

"The Quarterly Meeting of the Circuit is also at liberty to appoint one or more persons to inspect the minutes and accounts of the Trustees,

though it has no power or control over the Trust. This provision, while it does not at all trench on the rights of the Trustees, will enable the Circuit through its Quarterly Meeting to ascertain the state of the Trust, and may be occasionally the means of saving Trustees from becoming involved in difficulties.

"Another safeguard to the Church and Connexion is a clause which directs that, in the event of a Sale becoming necessary or desirable, the Annual Assembly or the President shall have the first offer of the property. This is a point of great importance; but the Deed is so framed that the right of purchase can never be made the means of preventing a Sale of the premises, or a suitable arrangement for procuring new Trustees if the Assembly refuse or neglect to relieve the Trustees of their responsibilities.

"II. *As to the second object.*—The Trustees are allowed an uncontrolled discretion in the conduct of the Trust, so long as they do not attempt to divert the property from its proper use as a Chapel. There is no power of interference on the part of any Minister or Connexional Officer (except such as I have before specified), and the Trustees have no *ex officio* Chairman, but are empowered to elect at each meeting from among the persons present. The income of the property is directed to be applied in payment of the interest on borrowed money, and the current expenses of the Trust; and any surplus is to be devoted either to the support of the Ministry, or in aid of other Chapels or the Connexional funds, as the Trustees shall deem expedient. In this way the Trustees on the one hand are secured from interruption in their management of the affairs of the Trust, and on the other the Church is protected against the appropriation of surplus income to objects alien to its sympathies.

"The Trustees are, moreover, required to keep proper minutes and accounts, so that each Trustee may be able at all times to inquire into the pecuniary position of the Trust, and ascertain his own liability in regard to it.

"III. *As to the security of Trustees.*—On this head, the provisions of the Deed are as clear and liberal as it is possible to make them.

"Any Trustee who may advance money for the purposes of the Trust, or borrow on his personal responsibility (as for instance on Note or Bond), is indemnified from loss by being entitled to a lien on the property, which could be enforced for his benefit by the Court of Chancery. This is a most valuable protection to Trustees who may aid the Trust by lending or borrowing money, and an act of justice to them and their families.

"Still further to ensure safety to Trustees, the Deed provides that every meeting for taking into consideration any Mortgage, Sale, or Lease of the Chapel, or any alteration of, or addition to it, or for appropriating the funds of the Trust (except for ordinary expenses), or for instituting or defending any legal proceedings, shall be deemed a *special meeting*, and seven clear days' notice in writing must be given to each Trustee of the time, place, and purpose of such a meeting."



## INSTRUCTIONS

FOR THE

SETTLEMENT OF LAND, CHAPELS, SCHOOLS,  
AND OTHER PREMISES.

## I.—ON THE REFERENCE DEED.

1. Select as Trustees about twelve persons, who from character and interest in the Church, School, and Connexion, have qualifications adapting them to that office.

2. Obtain from the Circuit Minister, or from the Book Room, or the Connexional Chapel Secretary, a printed copy of the Reference Deed. *Price* 1s.

3. Make out a list of the Trustees, giving their *names in full*, correctly spelt, and clearly written, adding to each his *place of abode and occupation*. State also the amount of the Purchase Money; and, where a Ground Rent is payable, the amount thereof.

4. Hand the aforesaid list and a copy of the Reference Deed, together with the documents showing the Vendor's title to the land and premises, to a Solicitor; call his attention to the *Precedent* on pages 38, 39, 40, of the said copy, and request him to prepare a Conveyance or Lease in accordance therewith. The Vendor's title should be thoroughly investigated.

5. The Premises must be conveyed, assigned, or leased by Deed.

6. Premises of whatever tenure should (unless local circumstances prevent) be conveyed or leased by the Vendor or Lessor *direct* to the Trustees.

7. The Vendor himself, if it be deemed desirable, may be a Trustee.

8. If the land and premises are obtained to be used as a Chapel or School, or that a Chapel or School may be erected thereon, or on the site thereof, and for a *fair market price*, the Deed of Conveyance on trust will *not* need Enrolment in Chancery; but should the Trustees wish to enrol it, they can do so at any time. (31 & 32 *Vict. c. 44.*)

9. But if such Property is *not* intended to be used as

a Chapel or School, or for the erection of a Chapel or School, or if it is *wholly or partly a gift*, *Enrolment* of the Deed within six calendar months next after the date of its execution, is *essential*; and such Deed must be executed by the Grantor or Donor in the presence of two witnesses. (31 & 32 *Vict. c. 44.*)

10. No acknowledgment of the Deed by one of the parties thereto in order to its enrolment, is now required.

11. If the property is *given*, the gift will be void in case of the death of the Grantor within twelve calendar months. It is therefore desirable to treat such a gift as a purchase for a valuable consideration, the Grantor contributing to the Building or Trust-Fund a sum equal to the purchase money paid to him.

## II.—ON THE MODEL DEED.

If the *Model Deed* be preferred, the preceding instructions apply to it as fully as they do to the Reference Deed; *except* that the *Trustees must be Members of our Churches*, and a printed copy of the *Model Deed* must be substituted for that of the Reference Deed. *Price* 1s. The *Precedent* is on pages 56 to 59 of the said copy.

*Many advantages* accrue to Trustees, to the Churches, and to the Connexion, by settling Chapels, &c., on either the Reference or the Model Deed; and in so settling them *a great saving of expense is effected*.

A printed copy of the Deed on which the premises are settled, should be kept by the Stewards, the Treasurer, and the Secretary of the Trust.

HOW TO APPOINT NEW TRUSTEES IN THE  
OLD MANNER, WHICH MAY BE STILL  
ADOPTED.

## I.—ACCORDING TO THE MODEL DEED.

1. New Trustees *must* be appointed by the surviving Trustees whenever by death or disqualification the number of such surviving and qualified Trustees is reduced to *one third* of the original number.



2. New Trustees *may* be appointed at any time, if a majority of the existing Trustees deem such appointment advisable.

3. The number of Trustees appointed must be so great as to *make it equal* (including the Trustees remaining in office) to the original number. Thus, if the original number was *twelve*, and *six* of them are dead, disqualified, or released, then at least *six new* Trustees must be appointed.

4. Every new Trustee appointed, *must be a member of the United Methodist Free Churches.*

5. The appointment must be made by a *Special Meeting of the Trustees.* Of such Meeting notice must be given in writing, *three clear days at least before the time of holding it.* The notice must state that the Meeting is a *special one*, and also *that it is held for appointing new Trustees, and releasing so many of the present Trustees as may desire to be released, or as it may be deemed advisable to release, and for other purposes.* That notice must also state the *time and place* of such Meeting; and it must be signed by at least *two* of the Trustees, or by the *Trustees' Steward or Treasurer.* The notice must be given to the Trustees, or left for them, or sent by post to them, respectively, *at their most usual or last known place or places of abode or business.*

6. When Trustees have been selected, then a list must be made out of—

- (1.) *Deceased Members*, mentioning time and place of death and burial, if these particulars can be ascertained.
- (2.) *Trustees who are disqualified*, or who desire to retire from the trust; with their *present* residences and occupations.
- (3.) *Continuing Trustees*, stating their *present* places of residence, and their occupations.
- (4.) *New Trustees*, with their names correctly written, and their residences and occupations.
- (5.) The date and place of Special Meeting.

Then that list, together with a copy of the Model Deed and the Trust-Deed of the premises (or a copy of it), must be handed to a Solicitor, with a request that he will prepare the necessary Deed of Transfer.

## II.—ACCORDING TO THE REFERENCE DEED.

The course to be adopted in this case is the same as that under the Model Deed *except in the following particulars.*

*Under this Deed,—*

1. The notice of a *Special Meeting* may be given by two Trustees, or by the Chapel Steward or Stewards, or Treasurer or Treasurers, or by the *Superintendent Preacher.*

2. *Seven* clear days' notice of the Special Meeting must be given.

3. When new Trustees are appointed, the original number may be equalled, or reduced, or augmented.

4. A person may be appointed a Trustee who is not a member of the United Methodist Free Churches.

5. Every appointment is subject to the approval of the Circuit Quarterly Meeting. The time and place of such Quarterly Meeting must be given in the instructions to a Solicitor for a new Deed.

6. As soon as an appointment is made and confirmed by the Quarterly Meeting, the newly-appointed Trustees can act in conjunction with the continuing Trustees.

## HOW TO APPOINT NEW TRUSTEES UNDER THE TRUSTEES' APPOINTMENT ACTS, 1850 TO 1890.

### I.—UNDER THE MODEL DEED.

*The Deed.*

The Model Deed is dated 27th January, 1842, and was made for the Settlement of Premises at Deptford. If, therefore, premises are settled on this Deed the following Clause, or an abbreviation of it, will be found in one of the Deeds thereof:—

"Nevertheless upon such Trusts, and with, under and subject to such and the same powers and provisions as those expressed and contained in and by a certain Indenture of Release, bearing date on



or about the 27th day of January, in the Year of Our Lord 1842, and made between the Rev. Robert Eckett, therein described of the first part, John Hodgson, therein described of the second part, and William Alford, Edward Allwright, John Barton, Isaac Brown, Jesse Cole, Francis Cuthbertson, William Dowding, Henry Fininley, Henry Booth King, Thomas Thomas, Thomas Townson, and Robert Wood, of the third part, and enrolled in Her Majesty's High Court of Chancery on the 4th day of April, 1842, being a Deed made for the settlement of a piece or parcel of Ground and Chapel or Place of Religious Worship with their appurtenances, situate at Garden Row, in the parish of St. Paul's, Deptford, in the County of Kent, for the use of the Wesleyan Methodist Association, now called the United Methodist Free Churches, &c."

#### *General Principles.*

1. New Trustees *must* be appointed by the surviving Trustees, whenever by death, disqualification, or refusal to act, the number of such surviving and duly qualified Trustees is reduced to *one-third* of the original number.

2. New Trustees *may* be appointed at any time, if a majority of the Trustees for the time being deem such appointment advisable.

3. The number of Trustees appointed must be so great as to *make it at least equal* (including the Trustees remaining in office) *to the original number*. Thus, if the original number was *twelve*, and *six* of them are dead, disqualified, or released, then at least *six new* Trustees must be appointed.

4. Every new Trustee *must be a member of the United Methodist Free Churches*.

#### *Meeting to Appoint.*

5. The appointment must be made by a *Special Meeting of the Trustees*. Of such Meeting notice must be given in writing, *three* clear days at least before the time of holding it. The notice must state that the Meeting is a *special one, held for appointing new Trustees in the place of deceased and retiring Trustees*, and for other purposes relating thereto. It must also state the *time and place* of such Meeting; it must be signed by at least *two* of the Trustees, or by the *Trustees' Steward* or

*Treasurer*, and given to every Trustee, or left for, or sent by post to him at his most usual or last known place of abode or business.

#### *The Memorandum: How to Prepare it.*

1. The legal appointment of new Trustees is fully made by the Resolution of the said Special Meeting, but that appointment must be evidenced by a Memorandum, blank forms of which are, on application, supplied by the Connexional Chapel Secretary, price 5s. 6d. each. For a precedent of the Memorandum, see pages 246 and 247.

2. As the Memorandum must be signed in the Meeting which appoints the new Trustees, it is desirable, indeed almost necessary, to hold *two Meetings*, or a Meeting and an Adjournment thereof. At the first Meeting the new Trustees should be *nominated only*; and they should then be communicated with to ascertain whether they will accept office. At the second or adjourned Meeting, the formal appointment of such nominees as consent (and of others, if needed to make up the number required) must be made by Resolution.\* Before the Second or Adjourned Meeting the Memorandum should be prepared and filled up as far as practicable. And it must be completed and EXECUTED BY THE CHAIRMAN in that Meeting, in the presence of two Witnesses who are not Trustees.

3. The Chairman executes the Memorandum by signing his name opposite the Seal at the foot thereof, and then putting his finger on the Seal and saying, "*I deliver this as my act and deed.*"

4. The Deeds of the premises must be seen and examined, before the Memorandum is filled up, to ascertain their dates, that the same may be entered in the heading of the Memorandum; and also to ascertain the Names, Residences, and Occupations of the old Trustees, as they are therein set forth; and those Names, Residences, and Occupations must be entered in the First Section of the Memorandum. The name of the parish or town in which each of the old Trustees resided when the Deed was made is sufficient, without details of Streets, &c.

\* For form of Resolution see page 249.



5. Access to the Deeds is easy if they are in the possession of the Trustees ; but if they are in the hands of a Montgaguee or Solicitor, an appointment should be made with him, when one or two friends should attend and copy from the Deeds their dates, and the names, &c., of the Trustees. If a Solicitor has to be communicated with, a fee will have to be paid.

6. In the Second Section of the Memorandum, the Names, *present* Residences, and Occupations of the Trustees who continue in office must be inserted.

7. The Third Section is *solely* for the Names, Residences, and Occupations of the *new Trustees*.

8. As soon after the execution of the Memorandum as possible, it should be taken to a Stamp Office to have a *Ten Shilling Stamp* impressed thereon, or it should be sent to the Connexional Chapel Secretary for that purpose, and also that he may register it. *It must be Stamped within thirty days* after the date of the Trustee Meeting, or it will be worthless.

9. No person must sign the Memorandum except the Chairman of the Trustee Meeting and the two Witnesses.

*Precedent of Memorandum, showing how it is filled up.*

Memorandum of the Choice and Appointment of New Trustees of the United Methodist Free Church, School, and Premises, situate in Lever Street, Manchester, the property comprised in and dealt with by Deeds dated respectively 20th May, 1836, 12th June, 1849, and 25th April, 1884, at a Meeting duly convened, constituted, and held for that purpose in the Vestry of the said Church, on the 10th day of September, 1891.

The Rev. JOHN ADCOCK, *Chairman*.

Names and Description of all the Trustees on the Constitution of the Trust, or on the last Appointment of Trustees, made on or about the 25th day of April, 1884.

NAME.	RESIDENCE.	OCCUPATION.
Thomas Rushworth	Manchester.	Brush Manufacturer.
George Swallow	Manchester.	Merchant.
John Webster	Manchester.	Broker.
John Williams	Manchester.	Commercial Clerk.
William Jones	Manchester.	Book Keeper.
Oliver Brooks	Manchester.	Warehouseman.

Names and Description of all the Trustees in whom all the said Premises now become legally vested :—

I.—OLD CONTINUING TRUSTEES.

NAME.	RESIDENCE.	OCCUPATION.
Thomas Rushworth	Manchester.	Brush Manufacturer.
George Swallow	Manchester.	Merchant.
John Williams	Manchester.	Commercial Clerk.



## II.—NEW TRUSTEES NOW CHOSEN AND APPOINTED.

NAME.	RESIDENCE.	OCCUPATION.
Ernest Phythian	Cheetham, Manchester.	Solicitor.
James Mather	Manchester.	Salesman.
William James	Manchester.	Fruiterer.

JOHN ADCOCK,  
Chairman of the said Meeting.



Seal.

SIGNED, sealed, and delivered by  
the said *John Adcock*, in the said  
Meeting, as Chairman thereof,  
on the 10th day of September,  
1891, in the presence of

DAVID JONES, Cheetham, Manchester, Commercial  
Traveller.

SAMUEL SMITH, Collyhurst, Manchester, Cotton  
Broker.

## SUGGESTIONS.

## I.—COPYHOLDS.

The Acts of 1850 and 1890 can be applied on the conditions named in Section 2 of the Act of 1850. The Acts operate to supply a Surrender by the Old Trustees to New Trustees appointed to succeed them, and the New Trustees, on making application to the Lord of the Manor, will be admitted by him on the same terms as if there had been an actual Surrender,

and the Steward of the Manor will enter the Memorandum, signed by the Chairman, on the Rolls, as showing the right of the New Trustees to admittance, just as is done in the case of a Will.

## II.—ENTRIES IN MINUTE BOOK.

It is strongly recommended that in order to preserve a record of the appointment in the *Minute Book of the Trust*, the following entries *should be made in it*, and signed by the Chairman; *but these details must NOT be inserted in the Memorandum, viz. :—*

Special Meeting of the Trustees of the United Methodist Free Church, Long Street, Markham, duly convened and held in the Vestry of the said Church, on the 20th day of June, 1892, the Rev. John Jones, Chairman. Present—C. O., F. E., D. R., L. N., and S. U.

It having been reported that—

(1.) The following Trustees had died, namely :—

T. R., J. W., and H. Y. ;

(2.) That the following Trustees had removed, or become disqualified to act, in the Trusts, namely :—

W. N., S. U., and F. M. ;

(3.) That the following Trustees desire to retire and be discharged from the Trusts, namely :—

W. M., C. H., and R. O. ;

(4.) And that the following Trustees were continuing in office, namely :—T. R., G. S., and J. W. ;

IT WAS RESOLVED :—That the following persons be, and they hereby are appointed Trustees of the said Church and Premises, together with the aforesaid continuing Trustees, namely :—E. P., J. M., W. J., &c.

JOHN JONES, *Chairman*.



## II.—UNDER THE REFERENCE DEED.

*The Deed.*

The Reference Deed is dated 1st November, 1865, and was made for the Settlement of Premises at Burnley. If, therefore, premises are settled on this Deed, the following Clause, or an abbreviation of it, will be found in one of the Deeds thereof:—

“Nevertheless upon such and the same Trusts, for such and the same intents and purposes, and with, under, and subject to such and the same powers, provisos, declarations, and agreements as are expressed and declared or referred to in and by a certain Indenture, bearing date the 1st day of November, 1865, and made between the Rev. Matthew Baxter, James Richmond, and John Baron, therein described, of the first part; the said James Richmond, and Robert Holt, William Hudson, Thomas Carr, Robert Tattersall, Cornelius Farrer, Robert Spencer, and John Halstead, therein described, the said John Baron, and James Wiseman, John Matthew Todd, Thomas Harling, James Hudson, Thomas Crook, Richard Hartley, and John Wilkinson, therein described, of the second part; and Henry Fricker Lawes, the younger, therein described, of the third part; and enrolled in the High Court of Chancery on the 10th day of November, 1865, being a Deed made for the settlement of a piece or parcel of Ground and Chapel or Place of Religious Worship with the appurtenances, situate at Burnley, in the County of Lancaster, for the use of the United Methodist Free Churches.”

## I.—GENERAL PRINCIPLES.

1. New Trustees *must* be appointed by the surviving Trustees whenever by death, disqualification, or refusal to act, the number of such surviving and duly qualified Trustees is reduced to one-third of the original number.

2. New Trustees *may* be appointed at any time, if a majority of the Trustees for the time being deem such appointment advisable.

3. When new Trustees are appointed, the original number may be equalled, or reduced, or augmented.

4. A person may be appointed a Trustee who is *not* a member of the United Methodist Free Churches.

5. Every appointment must be submitted to the Circuit Quarterly Meeting for its approval.

## II.—MEETING TO APPOINT.

The appointment must be made by a *Special Meeting* of the Trustees. Of such Meeting notice must be given in writing, *seven* clear days at least before the time of holding it. The notice must state that the Meeting is a *special one*, held for appointing new Trustees in the place of deceased and retiring Trustees, and for other purposes relating thereto. It must also state the *time and place* of such Meeting; it must be signed by at least *two* of the Trustees, or by the Chapel Steward or Stewards, or Treasurer or Treasurers, or by the Superintendent Preacher, and given to every Trustee, or left for, or sent by post to him at his most usual or last known place of abode or business.

## III.—THE MEMORANDUM: HOW TO PREPARE IT.

The instructions under this head relating to the Model Deed on pp. 245 and 246, numbered from 1 to 9, apply equally to the Reference Deed.

## PRECEDENT OF MEMORANDUM—SHOWING HOW IT IS FILLED UP.

Memorandum of the Choice and Appointment of New Trustees of the Church and Premises, situate at Lower Crumpsall, in the City of Manchester, the property comprised in and dealt with by Deeds dated respectively 14th March, 1862, and 27th February, 1879, at a Meeting of the Trustees duly convened, constituted, and held for that purpose at the said Church, on the 12th day of September, 1891.

The Rev. JOHN ADCOCK, *Chairman*.



Names and Descriptions of all the Trustees on the Constitution of the Trust, or on the last Appointment of Trustees, made on or about the 27th day of February, 1879.

NAME.	RESIDENCE.	OCCUPATION.
Joseph Richardson,	Manchester,	Joiner.
John Barker,	Eccles,	Gentleman.
Thomas Jones,	Manchester,	Grocer.
Arthur Jones,	Manchester,	Grocer.
William Roberts,	Crumpsall,	Cotton Spinner.

Names and Descriptions of all the Trustees in whom all the said Premises now become legally vested :—

#### I.—OLD CONTINUING TRUSTEES.

NAME.	RESIDENCE.	OCCUPATION.
John Barker,	Eccles,	Gentleman.
Arthur Jones,	Manchester,	Grocer.

#### II.—NEW TRUSTEES NOW CHOSEN AND APPOINTED.

NAME.	RESIDENCE.	OCCUPATION.
James Gordon,	Manchester,	Commercial Clerk.
Edwin Jenkins,	Crumpsall,	Confectioner.
George Hamilton,	Crumpsall,	Coal Agent.
Frederick Clapham,	Manchester,	Solicitor.
Jeremiah Robinson,	Manchester,	Collier.
Edwin Walker,	Crumpsall,	Salesman.

JOHN ADCOCK,  
*Chairman of the said Meeting.*

Seal.

Signed, sealed, and delivered by  
the said JOHN ADCOCK, in the said  
Meeting, as Chairman thereof,  
on the 12th day of September,  
1891, in the presence of

WILLIAM THOMAS, Crumpsall, Fishmonger.

THOMAS BROWN, Crumpsall, Ironmonger.



The foregoing appointment was approved by the Circuit Quarterly Meeting, held at Lever Street, Manchester, the 25th day of September, 1891.

JOHN ADCOCK,

*Chairman of the said Quarterly Meeting.*

SIGNED by the said JOHN ADCOCK,  
as Chairman of the said Quarterly  
Meeting, in the presence of }

WALTER BEAUMONT, Whalley Range, Gentleman.

*For Suggestions on—I., Copyholds; and II., Entries  
in Minute Book, see pages 248 and 249.*

## REGULATIONS OF CHAPEL FUNDS.

### I.—GENERAL REGULATIONS.

#### OBJECTS.

1. These Funds are designed to accomplish the following objects, viz. :—

- (a.) To aid in the erection or purchase of Chapels in places where help is specially needed.
- (b.) To relieve such Chapels as are heavily burdened with debt, and which are settled according to the provisions of the Model Deed or Reference Deed.
- (c.) To assist burdened Chapels which were built and settled on trust before the 1st day of August, 1866, and which, though not settled on either of the before-mentioned Deeds, are, nevertheless, so settled as to be Connexional. But every Chapel purchased or erected from and after the 1st day of August, 1866, must be settled on either the Model Deed or Reference Deed, to entitle the Trustees to apply for help from these Funds.

#### COMMITTEE.

2. These Funds shall be under the direction of a Committee, designated The Chapel and Superannuation Funds Committee. The Committee consists of the four Connexional Officers; the General Missionary Secretary; the Treasurer and Secretary of the Chapel Funds, and Superannuation

and Beneficent Fund, respectively; the Treasurer of the Sunday School Fund; and thirteen other brethren, one from each of the home districts, who shall be elected by ballot. The thirteen brethren having the highest number of votes shall be declared to be duly elected. No member of the Connexional Committee or Missionary Committee shall be eligible for election on this Committee.

#### COMMITTEE'S FUNCTIONS.

3. The Committee, so chosen and constituted as aforesaid, shall advise with Circuits and Churches in reference to Building, Enlarging, Purchasing, and Legally Settling Chapels and other Premises; obtain Statistics relating to Chapels and other Connexional Property; receive and consider all applications for help, and report upon them to the Annual Assembly; and take such other measures in the management of these Funds as they may judge necessary or expedient.

#### CONSULTATION, &c.

4. (a.) As it is exceedingly desirable, not only for the interest of Trustees and particular Societies, but also for the welfare of the United Methodist Free Churches generally, that the Committee should be consulted previously to the Erection, or Purchase, or Legal Settlement of any Chapel, or such Alteration or Enlargement of any Chapel as is likely to involve considerable expense, it is earnestly recommended to all who intend to build, purchase, alter, enlarge, or settle any Chapel, that they consult the Committee, through the Secretary, before proceeding to carry out their intention.

(b.) For giving effect to the foregoing recommendation, a form shall be supplied to parties applying to the Secretary, embodying such inquiries as the Committee may deem needful, and to which answers shall be given by the Applicants, for the guidance of the Committee. The plans of the intended buildings approved by the Circuit Quarterly and District Meetings should also be forwarded to the Committee for inspection before any contract for their erection is made.

(c.) If in any instance the Committee be not consulted in the manner indicated above; or if the scheme in respect to which they are consulted should not receive their approval, and yet be carried out; or if a scheme, after having received the sanction of the Committee, should be so altered as to involve any large additional expense, the Trustees or promoters of it must not anticipate any assistance from these Funds.

#### INSPECTION OF SITES FOR NEW BUILDINGS.

5. Since grievous mistakes are often made in the selection of sites for Places of Worship, the Chapel Secretary shall, as often as practicable, pay visits of inspection to the sites selected for New Chapels and Schools, and advise the Trustees thereon; and Trustees are earnestly counselled to avail themselves of his aid in such cases.

#### APPLICATION FOR GRANTS AND LOANS.

6. (A.) *Old Chapels.*—On application, a Schedule will be sent by the Secretary, which must be carefully filled up, and laid before the Circuit



Quarterly Meeting. If that meeting recommend the case to the Committee, the Schedule, with the resolution endorsed thereon, must then be brought before the District Meeting for amendment, rejection, or recommendation. Its resolution also is to be endorsed on the Schedule, which, when so completed, must be returned to the Secretary.

(B.) *New Chapels.*—In the case of a new Chapel, the whole scheme, set forth in a Schedule supplied by the Secretary on application, and the Plans of the Buildings, must be sanctioned and approved by both the Circuit Quarterly Meeting, and the District Meeting before it can be recognised by the Committee; and the Plans and Schedule so approved, with the evidences of such approval, must be sent to the Secretary for the Committee's use.

#### APPLICANTS DISQUALIFIED.

7. No application for Aid from the Trustees of any Chapel shall be entertained, unless such Trustees shall engage to make Annual Collections on behalf of the Chapel Relief Fund.

#### COLLECTIONS FOR THE CHAPEL RELIEF FUND.

8. In cases where Grants and Loans have been made to Trustees, and Collections have not been made in harmony with Connexional regulations, a communication shall be addressed to the Superintendent Minister and the Trustees, reminding them of their obligations in relation to this matter; and the Chapel Secretary will forward the communication.

#### TRUST ACCOUNTS.

9. The Minute Books and Accounts of Trusts aided by a Grant or Loan are to be always open to the inspection of the Chapel Secretary, or of any other person selected by the Chapel Committee to inspect them.

#### LIMIT OF TIME FOR CLAIMING GRANTS AND LOANS.

10. All Grants and Loans shall be void if three years elapse from the time they were promised before they are claimed.

#### LOANS, REPAYMENT OF, NOT RECKONED AS REDUCTION OF DEBT FOR CLAIMING GRANTS OR LOANS.

11. In no case shall the ordinary repayment of a Loan be reckoned as a reduction of the debt in fulfilment of the condition for the payment of a Grant or the advance of a further Loan.

#### FIRE INSURANCE.

12. It is a condition of all Loans and Grants made by the Chapel Committee that the premises on behalf of which they are made shall be insured in the *Connexional Fire Insurance Association*, except in such cases as may not be under the control of the Trustees owing to the terms of the mortgages to which they are subject, and the objection of the Mortgagees.

## II.—REGULATIONS OF THE RELIEF FUND.

### DESIGNATION.

1. The designation of this Fund shall be the "CONNEXIONAL CHAPEL RELIEF FUND."

### MODE OF SUPPORT.

2. To obtain means for accomplishing the objects of this Fund, Donations and Annual Subscriptions shall be solicited; and the Connexional Preachers, together with such friends as may be willing to assist, or such person or persons as may be appointed by the Quarterly Meetings for this purpose, shall make application for Donations and Subscriptions in their respective Circuits; and it is earnestly recommended that Collections be also made annually in all our Chapels in aid of this Fund.

Both this and the Loan Fund may be materially assisted by Legacies payable to the Treasurer thereof for the time being out of personal estate. (See Notices and Suggestions, p. 259.)

### TIME OF REMITTANCE.

3. As it is important that the amount contributed to this Fund should be ascertained before the last Meeting of the Committee in each year, it is strongly recommended by the Annual Assembly that all contributions to this Fund should be collected before 31st March, and that the amounts obtained should be forthwith sent to the Secretary. In any case, the Superintendent Minister is requested to see that such moneys as are raised for this Fund in his Circuit be remitted not later than the first day of May.

## III.—REGULATIONS OF THE LOAN FUND.

### DESIGNATION.

1. The designation of this Fund shall be the "CONNEXIONAL CHAPEL LOAN FUND."

### CONDITIONS.

2. Applicants for Loans shall produce their Trust-Deeds when and as the Committee may direct; and they shall engage to maintain a reasonable system of Pew Rents (or such other substitute as the Committee may approve), to contribute annually from the income of their Trusts Estates to this or the Chapel Relief Fund, and to appropriate the surplus income of their Trust Property to the reduction of the debt thereon, so long as any debt remains, and to the support and extension of the work of God in their own circuit or neighbourhood, or in aid of recognised Connexional objects; and to adopt the resolutions printed on the first page of the Loan Fund Schedules.



## ADVANCEMENT.

3. The usual terms on which Loans are granted, together with any special conditions mentioned in the resolutions granting Loans, must be agreed to by the applicants, and, so far as they are preliminary to payment, fulfilled by them, before the Loan can be advanced by the Committee.

## SECURITY.

4. In every case the parties who obtain a Loan shall give such legal security for its repayment as the Committee shall require.

## AMOUNT.

5. Trustees who apply for a Loan shall state the amount of Debt which they intend to liquidate; any sum, *not above one-half of that amount*, may, at the discretion of the Committee, be promised to the applicants as a Loan without interest, and the other half, or such sum as the Committee may appoint, shall be raised by the applicants, and paid, or rendered available for the reduction of the debt, before the Loan is advanced.

## REPAYMENT.

6. All Loans shall be repaid by equal Quarterly or Half-yearly Instalments, within such period as may be agreed upon, not exceeding ten years. If any instalment remain unpaid for more than fourteen days after it has become due, it shall be charged with interest at the rate of 5 per cent. per annum, from the day on which it became due. And if default be made in the payment of such instalment and the interest thereon for more than three calendar months after the day on which it became due, then the balance of the Loan, together with interest thereon at the rate aforesaid, to be reckoned from the date on which the Instalment fell due, shall be forthwith recoverable.

## TRUSTEES' SUBSCRIPTION.

7. In addition to making Annual Collections for the Chapel Relief Fund, Trustees shall subscribe from their Trust-Fund not less than 10s. per cent. per annum on the Loan advanced to them, towards expenses.

## NOTICES AND SUGGESTIONS.

## TRUST-DEEDS AND CONVEYANCES.

Those who intend to purchase Property, or settle it on trust for Connexional Purposes, are advised to consult the Committee on the matter.

## DONATION OF PROPERTY.

Friends who wish to give Property of any kind to the Connexion by *Deed* or *Will*, are respectfully advised to consult the Committee on the best mode of giving effect to their wishes.

## FORM OF BEQUEST.

I give and bequeath to the Treasurer for the time being of the *Chapel Relief Fund*, or the *Chapel Loan Fund*, or the *Ministers' Superannuation and Beneficent Fund*, or the *Sunday School Fund*, or the *Silver Wedding or Commemorative Fund* of the United Methodist Free Churches (here name the property given if it is *not* money) free of Legacy or other Duty, to be applied by the Committee for the time being, of such Fund for any objects of such Fund to which the same may be legally applicable; or (if it be money), the sum of £ , free of Legacy Duty, to be applied by the Committee, for the time being, of such Fund, solely to any object or objects thereof to which the same shall, at my decease, be legally applicable. The receipt of such Treasurer to be a sufficient discharge for the said legacy.

*N.B.*—If a shorter form than the above be used, care should be taken to insert the correct names of the Denomination and of the Fund to which the legacy is given.

## TENURE OF LAND.

It is undesirable to erect Chapels or Schools on land of *short* Leasehold or Copyhold Tenure.



## CHAPELS TO BE CERTIFIED.

All our Chapels and other Buildings regularly used for celebrating Divine Worship, should be *Certified as Places of Worship belonging to the UNITED METHODIST FREE CHURCHES*. Proper Forms can be had from the Superintendent Registrar of the District. The cost is *Two Shillings and Sixpence*.

## PAYMENT OF GRANTS AND LOANS.

In every case evidence must be given of the satisfactory Settlement of the Premises, and of the fulfilment of all conditions required by the Resolution making a Grant, or Loan, before the Grant can be paid, or the Loan advanced.

## REMITTANCES.

All moneys for the Connexional Chapel Relief, or the Chapel Loan Fund, should be remitted to the *Secretary*.

## CHAPEL, SCHOOL, AND OTHER CONNEXIONAL PROPERTY.

By order of the Annual Assembly, and under the direction of the Chapel Committee, some interesting and instructive statistics were obtained in the year 1881 relative to Chapel and other Connexional property. From 1145 Chapels, out of the total of 1238 reported to the Annual Assembly of 1880, returns were obtained, leaving 93 not accounted for. To make the information as complete as possible, for these 93, a calculation was made on the basis supplied by the other returns. Entire correctness in such a case is not to be expected; but the figures are sufficiently accurate for all practical purposes. The returns in reference to the cost of the several kinds of property specified, and the debt thereon, are specially trustworthy.

To the statistics above referred to have been added the returns which have appeared in the Chapel Reports from 1882 to 1898, and the whole placed in a table, which we subjoin.

It will be matter of regret that, notwithstanding the

erection of 236 new Chapels during the last seventeen years, the number of Chapels has increased only from 1238 to 1249. From a careful examination of the Numerical Returns for these years, it appears that no less than 47 had become totally lost to the Connexion, leaving 178 of the new Chapels as replacements only of smaller and less convenient premises. It is, however, gratifying to know that the proportionate amount of money raised for new erections has, of late years, been much greater than formerly, and the reduction of trust debts has also been at a much higher rate.

The figures relating to Schools, Organs, &c., are those which relate to Buildings and Instruments which were not included in any building account; none of them, therefore, are reckoned twice over.



## STATISTICAL AND

Year.	CHAPELS.											
	Chapel Debt re- duced.	CHAPELS BUILT OR PURCHASED.					CHAPELS ENLARGED.			Other Special Expenditure.		
		No.	Cost.	Raised.	Debt.	Connexionally Settled.	Cost.	Raised.	Debt.	Cost.	Raised.	Debt.
1836-81	£ ..	1,238	£ 1,371,580	£ 932,409	£ 439,171	748	£ ..	£ ..	£ ..	£ 106,456	£ 84,853	£ 21,603
1882-86	126,663	72	107,695	54,318	53,377	59	57,239	37,606	19,633	4,022	3,885	137
1887	24,370	11	15,658	6,939	8,719	9	8,024	5,583	2,441	606	2,206	..
1888	23,606	18	24,461	11,303	13,158	15	10,783	7,853	2,930	380	392	..
1889	19,554	13	15,047	8,370	6,677	11	8,581	7,270	1,311	136	246	..
1890	25,244	20	25,480	13,239	12,241	16	10,808	5,857	4,951	1,940	1,773	167
1891	25,417	17	21,104	8,531	12,573	14	15,542	10,808	4,734	390	230	160
1892	24,656	16	17,557	9,507	8,050	14	11,863	7,829	3,534	488	655	..
1893	22,170	15	14,395	5,567	8,828	12	13,279	10,732	2,547	999	1,034	..
1894	18,967	10	11,802	5,981	5,821	8	14,024	7,720	6,304	124	244	..
1895	23,179	11	14,197	8,285	5,912	9	12,122	6,949	5,173	..	3,743	..
1896	21,866	10	17,600	10,152	7,448	8	10,102	5,432	4,670	..	4,440	..
1897	31,971	14	11,407	5,913	5,494	11	7,885	4,352	3,533	12,521	9,147	3,374
1898	31,340	9	23,480	14,523	8,957	7	2,686	1,428	1,258	9,381	6,034	3,347
	419,503	1,474	1,691,463	1,095,037	596,426	941	182,438	119,419	63,019	137,443	118,882	28,808
Chapels lost, . 47		225	74,750	7,241	35,808	184						
Replaced, 178		1,249	1,616,713	1,088,796	560,618	757						

## FINANCIAL TABLE.

SCHOOLS.					MINISTERS' HOUSES.					GENERAL.
SCHOOLS BUILT OR PURCHASED.				Connexionally Settled.	HOUSES BUILT OR PURCHASED.				Connexionally Settled.	Total raised for the foregoing Objects.
No.	Cost.	Raised.	Debt.		No.	Cost.	Raised.	Debt.		
£	£	£			£	£	£	£		
117	160,671	122,399	28,27	293	65	26,128	10,689	15,439	25	1,150,350
70	40,906	23,557	23,438	61	18	8,881	1,745	7,136	15	247,774
6	2,309	1,077	1,232	4	3	646	73	573	2	40,748
16	6,030	3,724	2,362	12	5	2,115	780	1,335	4	47,658
8	4,377	2,830	1,547	6	6	3,443	2,051	1,392	5	40,321
7	7,175	4,893	2,282	6	7	2,832	1,408	1,424	6	52,414
6	9,300	3,661	5,705	4	3	2,017	1,597	420	2	50,244
13	9,721	6,682	3,039	10	3	4,554	904	650	3	50,233
7	3,731	2,787	944	5	3	995	15	980	2	42,305
10	16,475	9,073	7,402	13	2	92	92	..	2	42,077
9	5,094	2,305	3,379	7	4	1,675	525	1,150	3	44,986
13	9,085	4,961	4,124	11	4	1,635	508	1,127	3	47,359
10	16,102	7,844	8,258	8	2	710	95	615	2	59,322
6	3,000	1,560	1,446	4	7	3,409	345	3,064	6	55,230
300	300,783	107,353	93,430	444	132	56,132	20,827	35,305	80	1,971,621